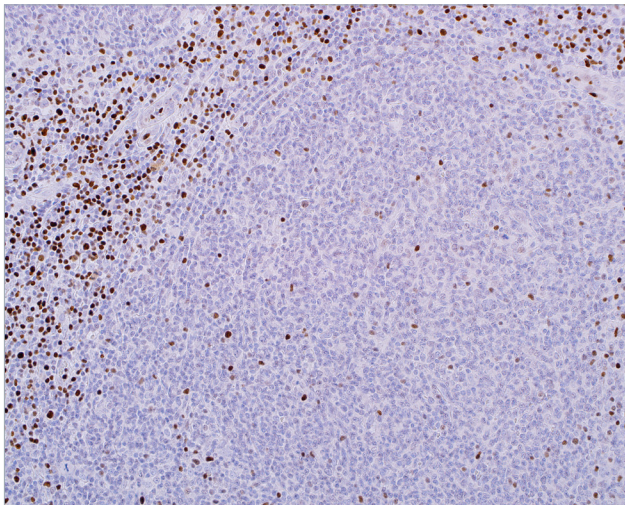
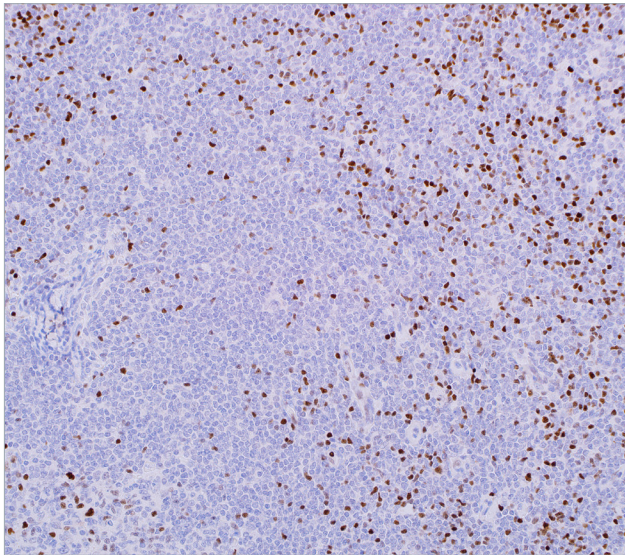
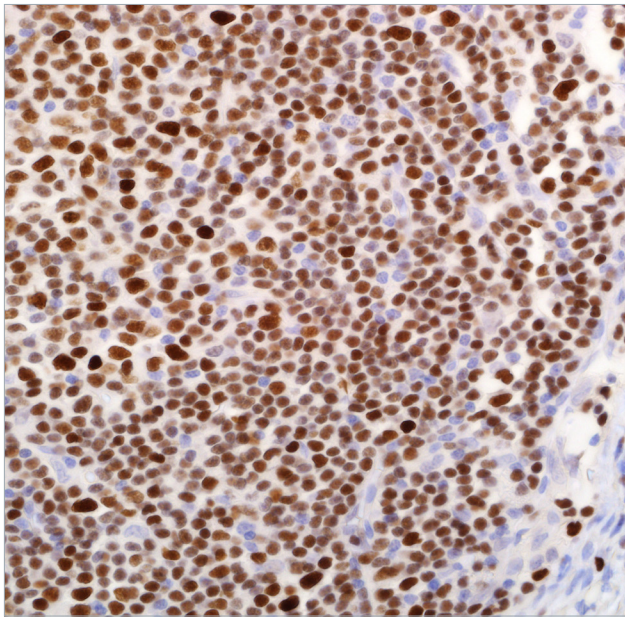


Spotlight on: LEF1 (EP310)



Chronic lymphocytic leukemia/small lymphocytic lymphoma (CLL/SLL) are small B-cell neoplasms that make up almost 1% of all diagnosed cancers.¹ Included in the differential diagnosis of small B-cell lymphomas from SLL/CLL are mantle cell lymphoma, follicular lymphoma, and marginal-zone lymphoma. Small B-cell lymphoma subtypes are morphologically similar and can be distinguished from each other by immunohistochemistry. Although the common immunophenotype for CLL/SLL is CD20+, cyclin D1-, SOX-11-, CD23+, CD5+ and CD10-, there are variable percentages for each antibody marker that will show aberrant expression. CD23 is the standard diagnostic biomarker for CLL/SLL; however, 10-15% of CLL/SLL will be CD23-negative.² Because of this phenomenon, other differential diagnostic markers exhibiting sensitivity and specificity for CLL/SLL are desirable.

Lymphoid-enhancer-binding factor-1 (LEF1) is a nuclear marker that is expressed in up to 100% of CLL/SLL.³ One study cited LEF1 as having a 92% specificity and 70% sensitivity for CLL/SLL lesions.⁴ This diagnostic function of LEF1 justifies its inclusion into standard B-cell lymphoma panels.

Benefits of Rabbit Monoclonal LEF1:

- For *in vitro* diagnostic use
- Nuclear visualization for easy interpretation
- Differentiates CLL/SLL from mantle cell lymphoma, follicular lymphoma, and marginal-zone lymphoma
- May detect CD23-negative CLL/SLL lesions

References:

1. <http://seer.cancer.gov/statfacts/html/clyl.html>
2. <http://surpathcriteria.stanford.edu/bcell/sllcll/differentialdiagnosis.html>
3. Tandon B, et al. Mod Pathol. 2011; 24:1433-43.
4. Menter T, et al. J Clin Pathol. 2015; 68:473-8.

Photo Information:

Top: LEF1 is expressed strongly and diffusely in small lymphocytic lymphoma.

Center: Mantle cell lymphoma tumor cells are negative for LEF1.

Bottom: LEF1 is negative in low-grade follicular lymphoma tumor cells.

Ordering Information:

Volume	Part No.	Volume	Part No.
0.1 ml, concentrate	442R-14	1 ml, prediluted	442R-17
0.5 ml, concentrate	442R-15	7 ml, prediluted	442R-18
1 ml, concentrate	442R-16	Positive control slides	442S

Using RabMAb® technology from Abcam, LEF1 has the sensitivity of a rabbit antibody with the specificity and cleanliness of a monoclonal antibody for a strong signal to noise ratio.

CELL MARQUE

RabMAb®
Technology from Abcam

medac

Theaterstraße 6
22880 Wedel

Tel.: 04103 8006-342
Fax: 04103 8006-359

www.medac-diagnostika.de