

in situ Hybridization

DNADetector™ *in situ* Hybridization Kits

DNADetector *in situ* Hybridization Kits provide simple sensitive detection of DNA in cells, tissues, and metaphase chromosomes. Available for both chromogenic and fluorescent methods, these convenient kits include everything you need for *in situ* hybridization and detection of DNA except for biotinylated probe.

DNA Detector Chromogenic *in situ* Hybridization Kit:

- Brilliant blue stain gives excellent contrast to red counterstains.
- TrueBlue™ substrate provides superior resolution; very fine precipitate vs. large clumps of color with BCIP/NBT.
- Sensitivity equal to that of FISH with permanent results.
- Kit contains all reagents, including control slides to perform *in situ* hybridization.

Biotin-labeled primary antibody must be supplied by kit user.

DNADetector Fluorescent *in situ* Hybridization Kit:

- Cy3 conjugates provide 5 - 10 times greater fluorescence than fluorescein-labeled probes¹.
- Cy3 conjugates are more photostable than FITC or TRITC. Bright fluorescence can still be seen 6 months after staining.
- No new filters required. Cy3 conjugates are visualized using the standard filters for TRITC.
- Kit contains all reagents, including control slides to perform *in situ* hybridization. Biotin-labeled primary antibody must be supplied by kit user.

Photo on right: Cytomegalovirus infected cells detected with a biotinylated CMV probe and the DNADetector Chromogenic *in situ* Hybridization Kit using HRP-Streptavidin, TrueBlue and Orcein.

Photo on left: Cytomegalovirus infected cells detected with a biotinylated CMV probe and the DNADetector Fluorescent *in situ* Hybridization Kit using Cy3-Streptavidin and DAPI.

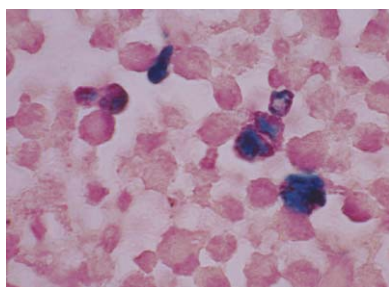
¹ Yurov, Y. B. et. al. Human Genetics, 97, 390-398 (1996)



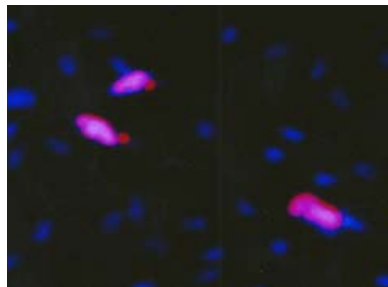
SEE MORE with KPL!

in situ Hybridization

DNADetector™ *in situ* Hybridization Kits



Herpes simplex virus infected tissue detected with a biotinylated herpes probe and the DNADetector Chromogenic *in situ* Hybridization Kit using TrueBlue and Orcein.



Cytomegalovirus infected cells detected with a biotinylated CMV probe and the DNADetector Fluorescent *in situ* Hybridization Kit using Cy3-Streptavidin and DAPI.

DNADetector Chromogenic *in situ* Hybridization Kit

Contents:

Hybridization Buffers
20X SSC
HRP Streptavidin Conjugate
Wash Solution
Conjugate Diluent buffer
TrueBlue Peroxidase Substrate
Orcein and Eosin Counterstains
Control Hybridization Cocktail
Control Slide

Sufficient reagents are provided for the hybridization and detection of 50 samples.

DNADetector Fluorescent *in situ* Hybridization Kit

Contents:

Hybridization Buffers
20X SSC
Cy3 Streptavidin Conjugate
Wash Solution
Conjugate Diluent buffer
DAPI Counterstain
Fluorescent Mounting Media
Control Hybridization Cocktail
Control Slide

Sufficient reagents are provided for the hybridization and detection of 50 samples.

Ordering Information

Catalog#	Description	Size
60-03-00	Chromogenic <i>in situ</i> Hybridization Kit	50 samples
60-05-00	Fluorescent <i>in situ</i> Hybridization Kit, Cy3/DAPI	50 samples
Detector Probe Labeling Kits		
60-01-00	Random Primer Biotinylation Kit	30 reactions
60-01-01	PCR Biotinylation Kit	30 reactions
60-01-02	RNA <i>in vitro</i> Transcription Kit	20 reactions

To order or for more information on KPL's full line of protein and nucleic acid detection products, contact us at 800.638.3167 / 301.948.7755, FAX 301.948.0169 or visit us at www.kpl.com.

DNADetector is a trademark of KPL, Inc.
Cy is a trademark of Amersham International PLC.

© 2003 KPL, Inc. All rights reserved.

ML224-11
1203

Related Products

Universal Block

Catalog No. 71-00-61

Size: 100 mL

Herring Sperm DNA

Catalog No. 60-00-14

Size: 40 mg

Fluorescent Mounting Media

Catalog No. 70-00-16

Size: 15 mL

Orcein

Catalog No. 71-01-01

Size: 50 mL

Eosin Y

Catalog No. 71-02-01

Size: 10 mL

DAPI Counterstain

Catalog No. 71-03-01

Size: 1.0 mg

medac
diagnostika

Theaterstraße 6 Telefon 04103/ 8006-342
D-22880 Wedel Telefax 04103/ 8006-359

www.medac-diagnostika.de

Gaithersburg, MD 20878
Phone: 800.638.3167
Fax: 301.948.0169
www.kpl.com

ISO 9001:2000 Registered



SEE MORE with KPL!