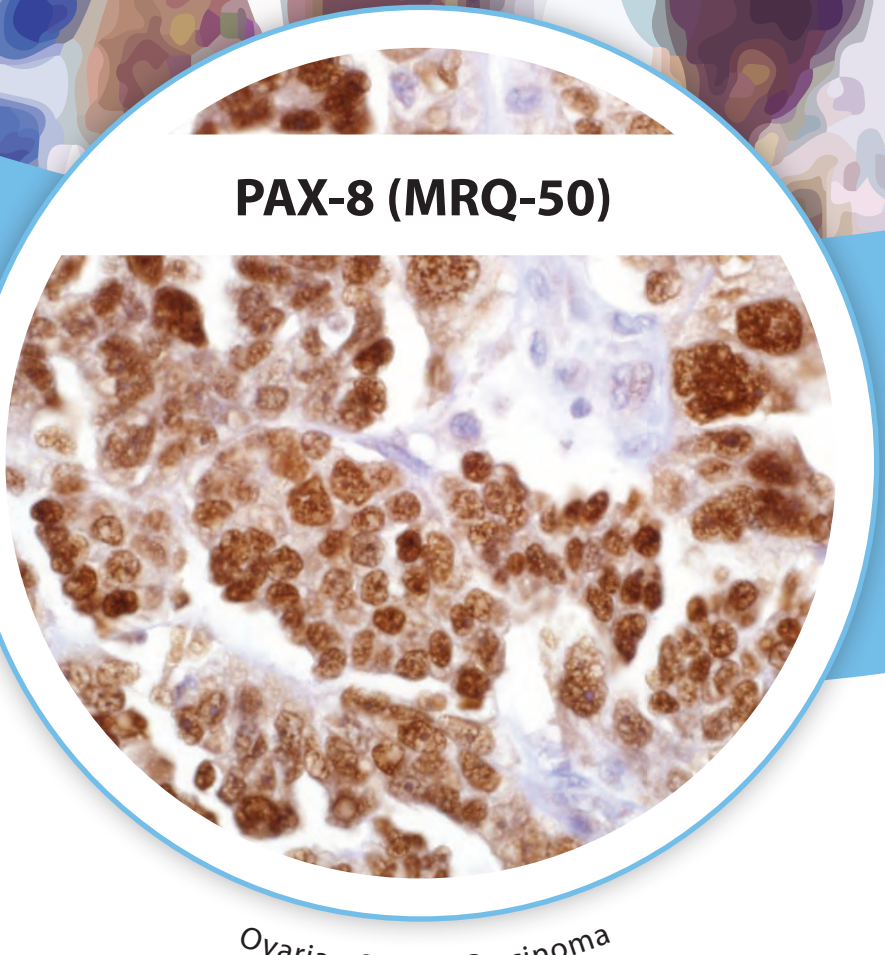


Organ Specific

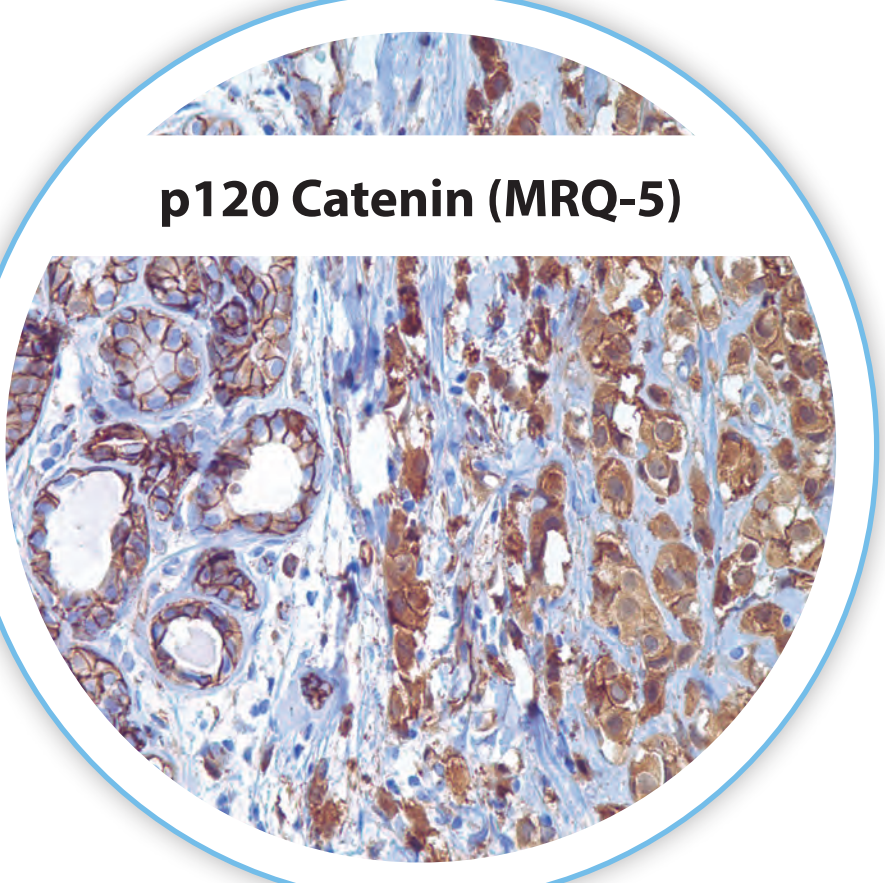
In the last decade, many new antibodies have been identified/characterized to targets that have led to applications in a particular organ or organ system. Along with these developments, new applications of more established antibody products have been discovered. It is with this in mind that Cell Marque presents the data below in table form for quick reference. Please be mindful of the fact that a '+' sign does not indicate that the antibody reacts with all of the tumors in a particular category and that a '-' sign does not mean that all tumors are negative for the indicated antibody. These indications are based on a preponderance of data in the literature. It must be kept in mind that these tables are in no way a substitute for knowledge of the literature with respect to a particular clone or polyclonal product; these tables represent results of a collation of the literature available to us at the time of preparation. Individual results within laboratories may vary somewhat as techniques and protocols are pertinent variables. It is the hope of Cell Marque that pathologists and laboratorians, in general, will find these useful in daily pathology practice when it comes to making differential diagnosis.

Robert Lang, M.D.



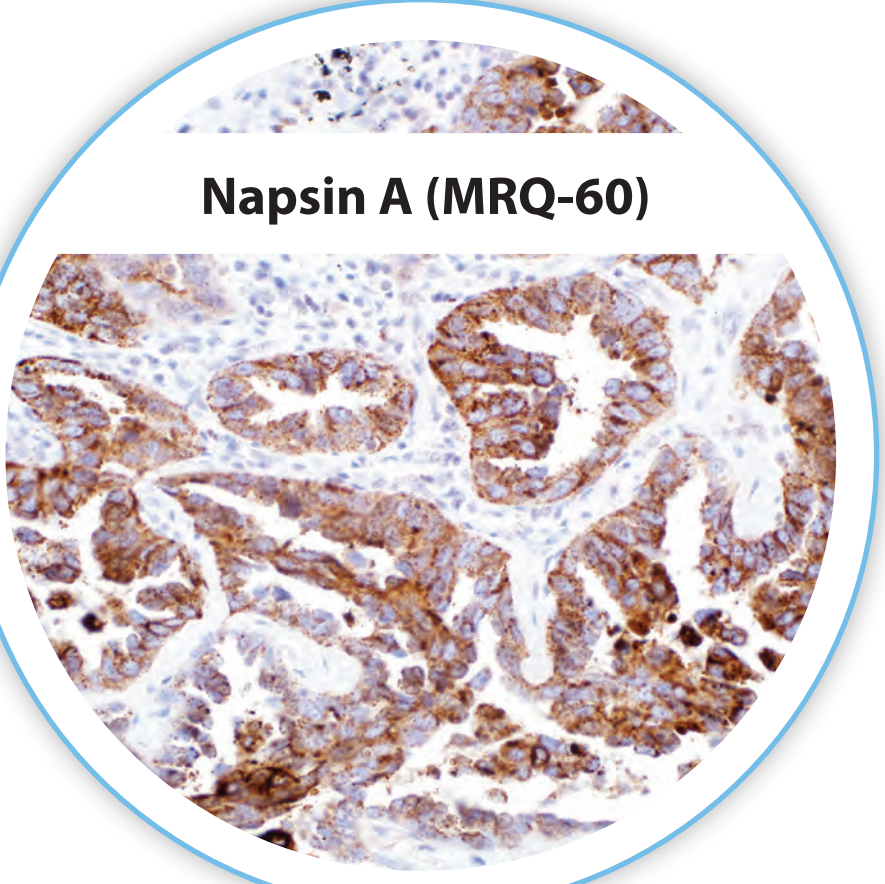
PAX-8 (MRQ-50)

Ovarian Serous Carcinoma



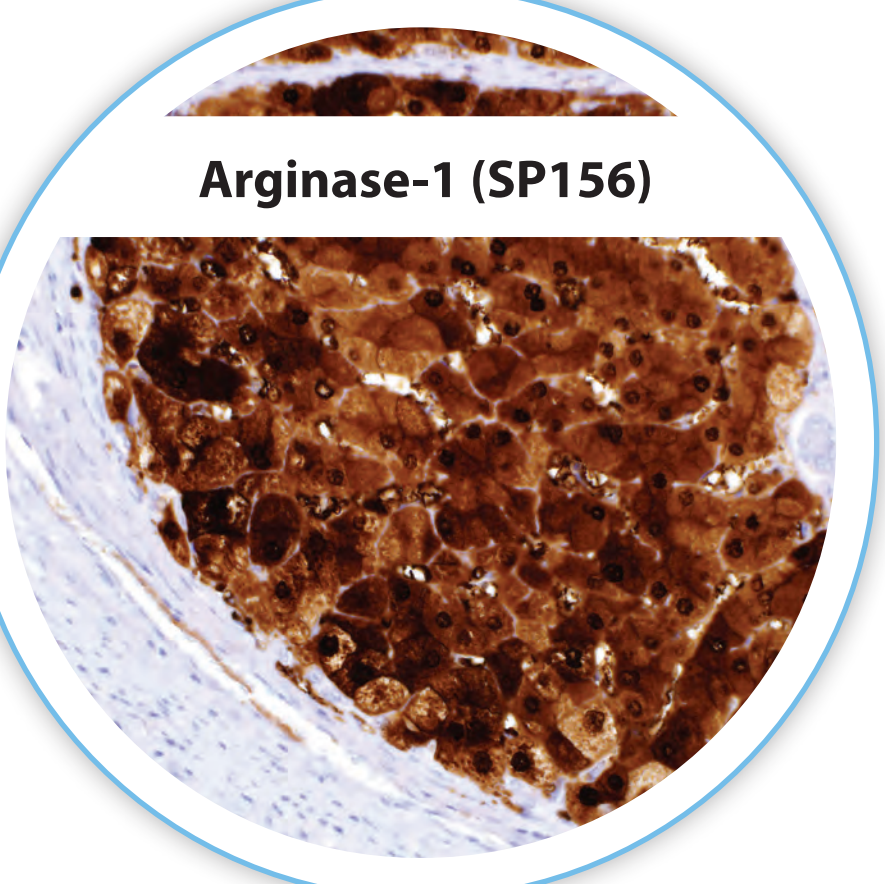
p120 Catenin (MRQ-5)

Invasive Lobular Carcinoma



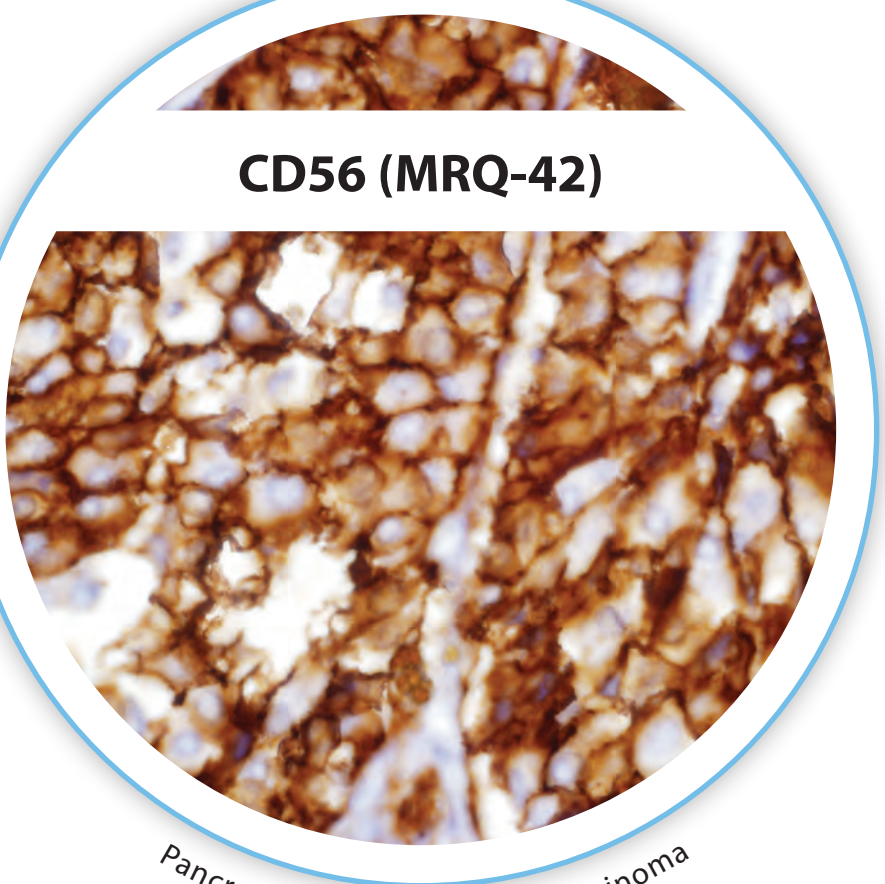
Napsin A (MRQ-60)

Lung Adenocarcinoma



Arginase-1 (SP156)

Liver Cirrhosis



CD56 (MRQ-42)

Pancreatic Neuroendocrine Carcinoma

Pancreatic Tumors																
	Synaptophysin	Chromogranin	Insulin	Glucagon	Gastrin	Somatostatin	CD56	Beta-Catenin	PGP 9.5	CK 19	CA19-9	S100P	E-cadherin	CD10	Maspin	IMP3
Pancreatic Ductal Carcinoma	-	-	-	-	-	-	-	+/-	-	-	+	+	+/-	+/-	+	+
Neuroendocrine Tumor	+	+	+/-	+/-	+/-	+/-	+	+	+	+/-	+/-	-	-	-	-	-
Solid Pseudopapillary	+	-	-	-	-	-	+	-	-	-	-	-	-	+	-	-
Acinic Cell Carcinoma	-	-	-	-	-	-	-	+	-	+	-/+	-	+	+/-	-	-
Pancreatoblastoma	-	+	-	-	-	-	+	+	-	-	-	-	-	-	-	-
Benign Pancreas	+	+	+	+	-	+	-	+	-	-	-	-	-	-	-	-

Brain: CNS Tumors											
	GFAP	Neurofilament	Synaptophysin	S-100	CK Cocktail	PR	EMA	Vimentin	NG2	INI-1	SOX-2
Astrocytoma	+	-	-	+	-	-	-	+	+	+	+
Glioblastoma	+	-	-	+	-	-	-	+	-	+	+
Oligodendroglioma	-	-	-	+	-	-	-	+	-	+	+
Ependymoma	+/-	-	-	+	-	-	-	-/+	+	+	+
Choroid Plexus Carcinoma	-/+	-	+	+	+	-	-	-	-	+	-
Central Neurocytoma	-/+	-	+/-	-	-	-	-	-	+	+	+
Neuroblastoma	+/-	+	+/-	+/-	-	-	-	-	+	+	-
Pineocytoma	-/+	-	+	+	-	-	-	-	-	+	-
Meningioma	-	-	-	-	-	+	+	+	-	+	-
Schwannoma	+	-	-	+	-/+	-	-	+	+	-	-
Rhabdoid Tumors	-	+/-	-	+/-	+	+	+	+	-	-	-
Metastatic Carcinoma	-	-	-	-	+	-/+	+	-/+	-	-	-

Cell Marque strives to be complete and accurate in the presentation of this information; however, Cell Marque, its shareholders, its officers, its employees, and its business associates assume no liability for any reliance on any of the contents of this poster including but not limited to any of the antibody panels without regard to whether or not these are accurate and/or complete. Furthermore, Cell Marque assumes no liability for any omissions. It is the sole responsibility of laboratories to independently validate the application and proper use of any product(s) under protocol(s). Cell Marque reserves the right to make any changes, additions, and/or deletions to its product offerings at any time without notice. The antibody panels were constructed based on Cell Marque's internal investigation with scores based on the percentage of positivity represented as follows: "+" for 6-40%, "+/-" for 40-50%, "-" for 50-60%, "-/-" for 60-100%, and blank for no available data.

*TWEEN is a registered trademark of Croda International PLC.

©2015 Sigma-Aldrich Co. LLC. All rights reserved. SIGMA-ALDRICH and Cell Marque are trademarks of Sigma-Aldrich Co.

Skin: Basal vs. Squamous Cell Carcinoma			
	CK Cocktail	Ep-CAM	EMA
Basal Cell Carcinoma	+	+	-
Squamous Cell Carcinoma	+	-	+

Breast Carcinoma in-situ vs. Infiltrating Breast Carcinoma			
	Calponin	SM Myosin	p63
Breast Carcinoma in-situ	+	+	+
Infiltrating Breast Carcinoma	-	-	-

Ovarian Carcinomas				
	PAX-8	WT1	CA-125	CEA
Ovarian Carcinoma, Serous	+	+	+	+
Ovarian Carcinoma, Mucinous	-	-	-	-
Ovarian Endometrioid Carcinoma	+	-	+	-
Ovarian Clear Cell Carcinoma	+	-	+	-

Meningiomas from Histologic Mimics					
	Claudin 1	EMA	S-100	CD34	GFAP
Meningothelial Meningioma	+	+	-	-	-
Atypical Meningioma	+	+	-	+	-
Fibrous Meningioma	-	+	+	-	-
Solitary Fibrous Tumor	-	-	-	+	-
Meningeal Hemangiopericytoma	-	-	-	+	-
Schwannoma	+/-	-	+	-	+

Liver Neoplasms					
	Arginase-1	Hep Par-1	Glypican-3	CD10	pCEA
Hepatic Adenoma	+	+	-	+	+
Hepatocellular Carcinoma	+	+	+	+	+
Metastatic Adenocarcinoma	-	-	-	-/+	-/+

Renal Cell Carcinoma vs. Hemangioblastoma					
	D2-40	FLI-1	CD31	CK Cocktail	CD10
Metastatic Renal Cell Carcinoma	-	-	-	+	+
Hemangioblastoma	+	+	+	-	-

Skin: Pagetoid Tumors					
	AE1	AE3	S-100	SOX-10	Vimentin
Melanoma	-	-	+	+	+
Paget's Disease	+	-	-/+	-	-
Bowen's Disease	+	+	-	-	-

Skin: Adnexal Tumors						
	CK7	CK20	S-100	EMA	GCDPF-15	CD15
Merkel Cell Carcinoma	-	+	-	+	-	-
Sebaceous Tumor	+	-	-	-	-	+
Apocrine Tumor	-	-	-	+/-	+	+/-
Eccrine Tumor	-	+	+	+	-	-

Breast Carcinoma									
	CK 7	CK 20	ER/PR	CD44	p40	CA19-9	p63	CK5	CD117
Infiltrating Ductal Carcinoma	+	-	+	+	-	-	-	-	-
Adenoid Cystic Carcinoma	+	-	-	-	+	+	+	+	+

Germ Cell Tumors										
	SALL4	SOX-2	Oct-4	PLAP	CD117	CD30	AFP	B-hCG	Synaptophysin	Glypican
Seminoma/Dysgerminoma	+	-	+	+	+	-	-	-	-	-
Embryonal Carcinoma	+	+	+	+	-	+	-	-	-	-
Yolk Sac Tumor	+	-	-	-/+	-/+	-	+	-	-	+
Choriocarcinoma	-	-	-	+/-	-	-	-	+	-	-
Mature Teratoma	-	+/-	-	+/-	-	-	+/-	-	-	-
Immature Teratoma	+/-	+	-	-	+/-	-	-	+/-	-	-
Carcinoid	-	-	-	-	-	-	-	-	+	-

PBS & TBS Wash Buffers with Tween® 20

Phosphate Buffered Saline (PBS) and Tris Buffered Saline (TBS) are concentrated wash solutions designed to rinse reagents from tissue slides. PBS is recommended with any detection system except those that contain alkaline phosphatase, while TBS is best used when it is present to avoid excessive phosphate accumulation. The addition of Tween® 20 may reduce background and thereby produce a cleaner stain.