

## c-Myc (EP121\*)

The *c-Myc* gene, which promotes proliferation and cell cycle progression, is found on chromosome 8q24. *c-Myc* protein is overexpressed in Burkitt lymphoma, resulting from chromosomal translocations on chromosome 8. The MYC protein is a transcription factor that activates expression of many genes through binding on consensus sequences (Enhancer Box sequences (E-boxes)) and recruiting histone acetyltransferases (HATs).

*c-Myc* amplification may be found in several types of tumors, including breast and prostate carcinomas, Burkitt lymphoma, and diffuse large B-cell lymphoma. Burkitt lymphoma, which are most characterized for *c-Myc* dysregulation, involve one of three chromosomal translocations. The most common variant, involving the *c-Myc* and IGH locus, is t(8;14)(q24;q32). This translocation is also found in the other lymphomas previously mentioned. Other rarer variants of Burkitt lymphoma include the *c-Myc* and IGK locus, t(2;8)(p12;q24), and the *c-Myc* and IGL locus, t(8;22)(q24;q11).

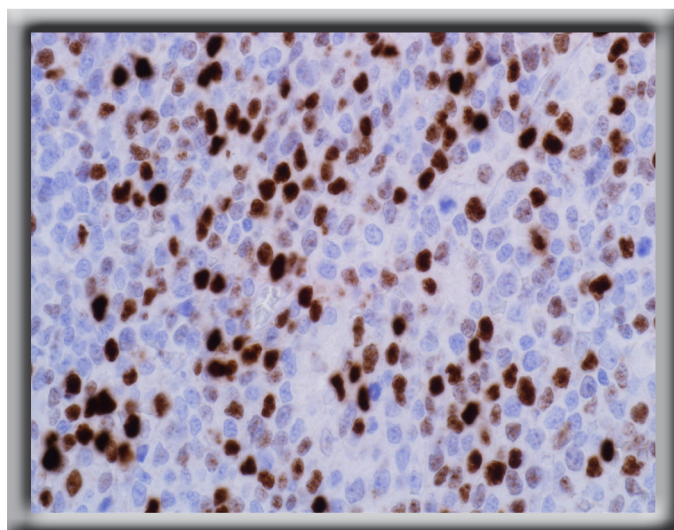
### Benefits of c-Myc:

- Clone EP121\* from Cell Marque has been formulated to label *c-Myc* expression in multiple tumors, including Burkitt lymphoma
- Shows *c-Myc* overexpression in prostate carcinomas
- Shows *c-Myc* amplification in breast carcinomas
- Utilized in a panel with CD20, CD10, BCL6, BCL2, adipophilin and Ki-67 to help diagnose Burkitt lymphoma

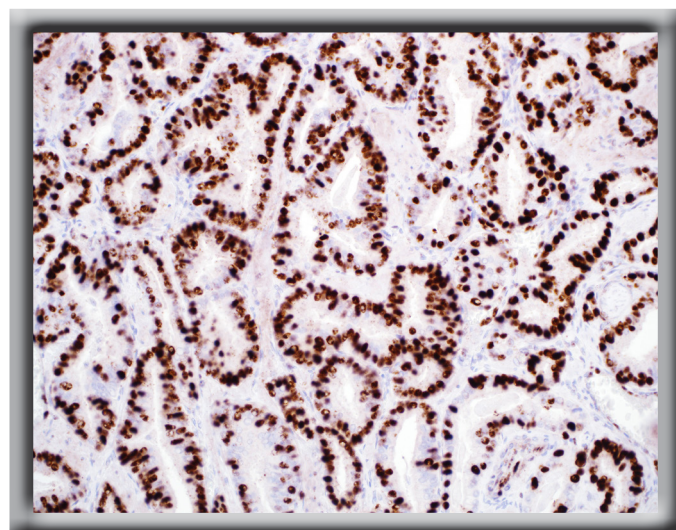
### Ordering Information

0.1 ml concentrate .....	.395R-14
0.5 ml concentrate .....	.395R-15
1 ml concentrate .....	.395R-16
1 ml predilute .....	.395R-17
7 ml predilute .....	.395R-18
5 positive control slides .....	.395S

\* Rabbit monoclonals produced using technology from Epitomics, Inc. under Patent No. 5,675,063.



Burkitt lymphoma cells are strongly highlighted in the nuclei by *c-Myc* antibody.



*c-Myc* protein is expressed in prostatic adenocarcinoma cells.