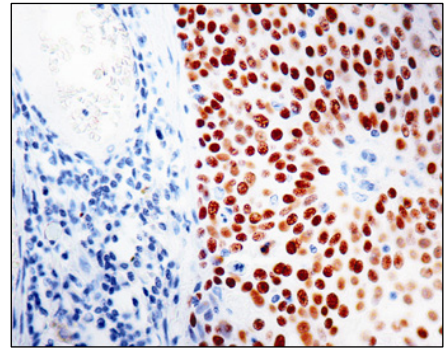


p63-Isoform ΔNp63 (p40) is superior to p63

- Same sensitivity with clearly better specificity
- „p40 staining was equivalent to p63 in sensitivity for SCC, but p40 was markedly superior to p63 with respect to specificity”.
- „The findings were stated to strongly support the routine use of p40 in place of p63 for the diagnosis of pulmonary SCC.” Hammar & Dacic 2014



Adnexal tumour and SCC of the skin:

Alomari AK, et al. *J Cutan Pathol* 2014; 41: 839-845
Lee JJ, et al. *Hum Pathol* 2014; 45: 1078-1083.

Bladder cancer / Squamous cell carcinoma:

Brandler TC, et al. *Cancer Cytopathol* 2014; 122: 468-473.
Gailey MP, Bellizzi AM. *Am J Clin Pathol* 2013; 140: 872-880.
Gaya JM, et al. *J Urol* 2015; 193: 1144-1150.
Ho PL, et al. *Nat Rev Urol* 2012; 9: 583-594.
Karni-Schmidt O, et al. *Am J Pathol* 2011; 178: 1350-1360.
Lin X, et al. *Hum Pathol* 2014; 45: 1824-1829.

Breast cancer:

Barbareschi M, et al. *Am J Surg Pathol* 2001; 25: 1054-1060.
Kim SK, et al. *Int J Clin Exp Pathol* 2014; 7: 1032-1041.
Sailer V, et al. *Virchows Archiv* 2015; doi: 10.1007/s00428-015-1766-z
Sarda R, Taylor J. *Arch Pathol Lab Med* 2014; 138: 584.

Gestational trophoblastic diseases (hydatidiform mole, chorionepithelioma):

Zhang HJ, et al. *Int J Gynecol Pathol* 2009; 28: 172-178.

Head-and neck cancer:

Bishop JA, et al. *Am J Surg Pathol* 2014; 38: 257-264.
Mitani Y, et al. *Am J Pathol* 2011; 179: 391-399.
Rooper L, et al. *Head Neck Pathol* 2015; 9: 79-84.
Tilson MP, Bishop JA. *Head Neck Pathol* 2014; 8: 141-145.

Lung cancer:

Ao MH, et al. *Hum Pathol* 2014; 45: 926-934.
Arason AJ, et al. *PLoS One* 2014; 9(2): e88683.
Aubry MC, et al. *Mod Pathol* 2015; 28: 359-366.
Bishop JA, et al. *Mod Pathol* 2012; 25: 405-415.
Butnor KJ, et al. *Hum Pathol* 2013; 44: 1479-1486.
Collins BT, et al. *Acta Cytol* 2013; 57: 619-624.
Hammar SP, Dacic S. **Immunohistology of lung and pleural neoplasms.** In: *Diagnostic Immunohistochemistry: Theranostic and Genomic Applications*, 4th edition, Ch. 12; p. 391-394. (Ed. Dabbs DJ, Elsevier, 2014).
Hwang DH, et al. *Arch Pathol Lab Med* 2014; 138: 626-635.
Nobre AR, et al. *Acta Cytol* 2013; 57: 1-8.
Nonaka D. *Am J Surg Pathol* 2012; 36: 895-899.
Pelosi G, et al. *Int J Surg Pathol* 2013; 21: 229-239.
Pelosi G, et al. *J Thorac Oncol* 2012; 7: 281-290.
Tatsumori T, et al. *Appl Immunohistochem Mol Morphol* 2014; 22: 377-382.
Travis WD, et al. *Arch Pathol Lab Med* 2013; 137: 668-705.
Vogt AP, et al. *Diagn Cytopathol* 2014; 42: 453-458.

Prostate cancer:

Sailer V, et al. *Histopathology* 2013; 63: 50-56.
Tan HL, et al. *Mod Pathol* 2015; 28: 446-456.
Uchida K, et al. *Hum Pathol* 2015; 46: 384-389.

Sarcoma:

Cimino-Mathews A, et al. *Am J Surg Pathol* 2014; 38: 1689-1696.
Henderson SA, et al. *Am J Surg Pathol* 2014; 38: 1102-1110.
Ram Kumar RM, et al. *BMC Cancer* 2014; 14: 559.

p63-isoforms, see:

http://atlasgeneticsoncology.org/Genes/GC_TP63.html

Ordering Information:

ΔNp63 (p40) Rabbit monoclonal ZR8,
1 ml conc. (1:100-1:200), **Z2004**

ΔNp63 (p40) Rabbit polyclonal,
0.5 ml conc. (1:50-1:100), **RP163-05**

ΔNp63 (p40) Rabbit polyclonal,
6 ml rtu, **PDR055**

p63, Mouse monoclonal 4A4,
1 ml conc., 1:100, **Z2003L**
6 ml rtu, **413751F**