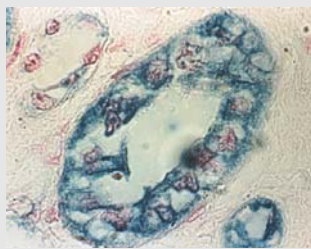


**HistoMark® TrueBlue**



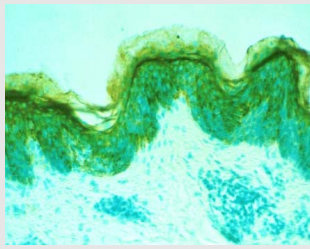
*Epithelial membrane antigen in kidney.*

**StableDAB®**



*Smooth muscle actin in skin tissue.*

**DAB Substrate**



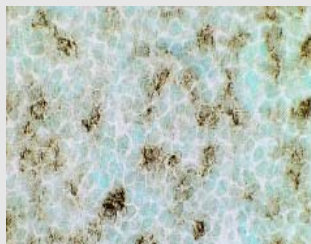
*Cytokeratin antigen in rat skin.*

**HistoMark® ORANGE**



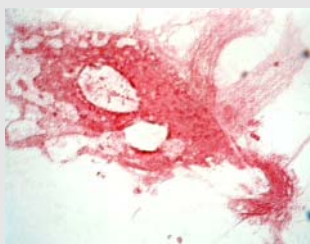
*Retinal pigment epithelial cells, Class III  $\beta$ -tubulin.*

**HistoMark® BLACK**



*T lymphocytes in tonsil.*

**HistoMark® RED**



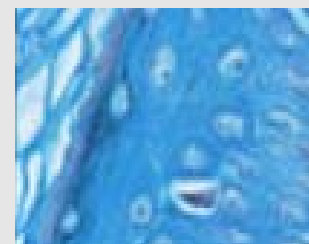
*Retinal glial cells, glial fibrillary acidic protein.*

**HistoMark® BLUE**



*Prostate-specific antigen in prostate.*

**HistoMark® X-Gal**



*Keratin in skin.*

**HistoMark®**

## HistoMark® Substrate and Staining Systems

HistoMark® Staining Systems provide rapid, precise localization of antigens in cells and tissues. Systems are available for the detection of peroxidase, phosphatase and  $\beta$ -galactosidase-labeled conjugates. Each kit contains the following reagents:

### HistoMark Substrate

Stable liquid concentrates provide a variety of colors for multiple staining applications.

### Substrate Buffer Solution

Maximizes color development

### Counterstain

Provides sharp contrast and enhances nuclear detail.

When used with KPL's HistoMark Biotin Streptavidin Kits, they offer brilliant, intense colors and superior performance.

- ◆ Stable, liquid systems eliminate waste
- ◆ Convenient, easy-to-follow protocols
- ◆ A variety of contrasting colors for multiple staining

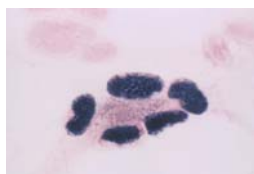


SEE MORE with KPL!

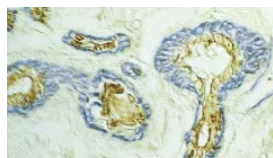
## HistoMark Substrate and Staining Systems

KPL's staining systems offer a variety of contrasting colors for high resolution multiple labeling applications.

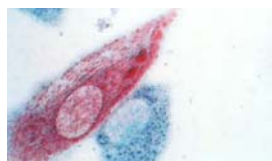
KPL's TrueBlue Substrate is highly recommended for *in situ* hybridization; a brilliant blue stain with superior resolution.



Cytomegalovirus-infected cells detected with a biotinylated CMV probe and the DNADetector Chromogenic *in situ* Hybridization Kit using TrueBlue.



**StableDAB** demonstrates cytokeratin 19 in breast tissue. **TrueBlue** demonstrates smooth muscle actin in breast tissue.



HistoMark **BLUE** demonstrates retinal pigment epithelial cells, Class III  $\beta$ -tubulin. HistoMark **RED** demonstrates keratin.

## Ordering Information

Catalog No.	Description	Size
<i>For use with phosphatase</i>		
55-69-00	HistoMark RED	1000 slides
55-70-00	HistoMark BLUE	1000 slides

<i>For use with peroxidase</i>		
54-74-00	HistoMark ORANGE	1000 slides
54-75-00	HistoMark BLACK	1000 slides
54-78-00	HistoMark TrueBlue	500 slides
54-10-00	DAB Reagent Set	500 slides
54-11-00	StableDAB Peroxidase Substrate	500 slides

<i>For use with <math>\beta</math>-galactosidase</i>		
54-13-00	HistoMark X-Gal Substrate Set	200 slides

<i>Counterstains</i>		
71-01-01	Orcein	50 mL
71-02-01	Eosin	10 mL
71-00-11	Contrast GREEN	50 mL
71-00-06	Contrast BLUE	50 mL
71-00-05	Contrast RED	50 mL

To order or for more information on KPL's full line of protein and nucleic acid detection products, contact us at 800.638.3167 / 301.948.7755, FAX 301.948.0169 or visit us at [www.kpl.com](http://www.kpl.com).

ML-264-05

StableDAB and HistoMark are registered trademarks of KPL, Inc.

© 2003 KPL, Inc. All rights reserved.

# HistoMark®

KPL's HistoMark Biotin Streptavidin Kits provide high signal-to-noise ratios when used with HistoMark Staining Systems.

KPL's HistoMark Substrates and staining systems can be utilized to obtain brilliant double-staining results. To read more about immuno-histochemistry double staining and for a guide to "HistoMark Double Staining Procedures" visit the "Technical Info" section at [www.kpl.com](http://www.kpl.com).

**medac**  
**diagnostika**

Theaterstraße 6      Telefon 04103/ 8006-342  
D-22880 Wedel      Telefax 04103/ 8006-359

[www.medac-diagnostika.de](http://www.medac-diagnostika.de)

Gaithersburg, MD 20878  
Phone: 800.638.3167  
Fax: 301.948.0169  
[www.kpl.com](http://www.kpl.com)

ISO 9001:2000 Registered



SEE MORE with KPL!