

# Carcinomas

Carcinomas are derived from epithelial tissues from many different sites throughout the body including, but not limited to: respiratory tract, GI tract, head and neck, biliary tract, liver, genitourinary tract, reproductive tract, skin, and breast. The varied morphology and differentiation of carcinomas present diagnostic challenges when found in the primary organ, and most especially in biopsied metastatic sites. This collection of tables represents an effort to tabulate useful information regarding the general reactivities of the specified antibodies in the respective carcinomas as listed. It must be kept in mind that these tables are in no way a substitute for knowledge of the literature with respect to a particular clone or polyclonal product; these tables represent results of a collation of the literature available to us at the time of preparation. Individual results within laboratories may vary somewhat as techniques and protocols are pertinent variables. It is the hope of Cell Marque that pathologists and laboratorians, in general, will find these useful in daily pathology practice when it comes to making differential diagnosis.

*W. Lacy, M.D.*

Carcinomas																					
	CK Cocktail	CK 7	CK 20	AE1	AE3	CK 5	p63	Vimentin	TTF-1	Thyro-globulin	GCDFP-15	ER/PR	CEA (polyclonal)	CDX-2	Villin	Hep-Par1	RCC	CD10	Beta-Catenin	GATA3	ERG
Breast Carcinoma	+	+	-	+	+	-	-	-	-	-	+	+/-	-	-	-	-	-	-	-	+	-
Colorectal Adenocarcinoma	+	-	+	+	-	-	-	-	-	-	-	-	+	+	+	-	-	+	+	-	-
Lung Adenocarcinoma	+	+	-	+	+	-	-	-	+	-	-	-	+	-	-	-	-	-	-	-	-
Prostatic Adenocarcinoma	+	-	-	+	-	-	-	-	-	-	-	-	-	-	-	-	-	+	-	-	-
Hepatocellular Carcinoma	-	-	-	-	-	-	-	-	+	-	-	-	+	-	-	+	-	+	-	-	+
Renal Cell Carcinoma	+	-	-	+	-	-	-	+	-	-	-	-	-	-	-	-	+	+	-	-	-
Thyroid Carcinoma	+	+	-	+	-	-	-	+	+	+	-	-	-	-	-	-	-	-	-	-	-
Pancreatic Carcinoma	+	+	-	+	+/-	-	-	-	-	-	-	-	+	-	-	-	-	+/-	-	-	-
Gastric Carcinoma	+	+	+			-	-	-	-	-	-	-	+	+	+	-	-	-	-	-	-
Transitional Cell Carcinoma	+	+	-	+	+	+	+	-	-	-	-	-	-	-	-	-	-	+	-	+	-
Squamous Cell Carcinoma	+	-	-	+	+	+	+	-	-	-	-	-	-	-	-	-	-	-	-	-	-
Ovarian Carcinoma, Non Mucinous	+	+	-	+	+	+	-	-	-	-	-	+	-	-	-	-	-	-	-	-	-
Endometrial Adenocarcinoma	+	+	-	+				+	-	-	-	+	-	-	-	-	-		+	-	-
Bladder Adenocarcinoma	+	-	+	+	+	-	-	-	-	-	-	-		+	+	-	-		+	(membranous)	+/-
Salivary Gland Carcinoma	+	+	-	+	+	+	+	-	-	-	-	-	+	-	-	-	-		-	+/-	-
Cervical Carcinoma	+	+	-	-		-	-	-	-	-	-	-	+	-	-	-	-		-	-	-
Sweat Gland Carcinoma	+	+	-			+	+	-		-	-	-	+	-	-	-	-		-	-/+	-

Colonic vs. Ovarian Carcinoma											
	CK 7	CK 20	CEA	CDX-2	Villin	CA19-9	Ber-EP4	WT1	CA-125	CK 5&6	PAX-8
Ovarian Carcinoma, Serous	+	-	+	-	+	+	+	+	+	-	+
Ovarian Carcinoma, Mucinous	+/-	+/-	-	+	+	+	+	-	-	-	-
Ovarian Carcinoma, Endometrioid	+	-	-	-		+/-	+	-/+	+	-	+
Colonic Carcinoma	-	+	+	+	+	+	+	-	-	-	-

Ampullary Carcinoma: Enteric vs. Ductal			
	CK 17	Hep-Par1	CDX-2
Enteric	-	+	-
Ductal	+	-	-/+

Carcinomas										
	CK 7	CK 20	CDX-2	Villin	TTF-1	Napsin A	PSA/PSAP	Mammaglo-bin	GCDFP-15	GATA3
Breast Carcinoma	+	-	-	-	-	-	-	+	+	+
Lung Adenocarcinoma	+	-	-	-	+	+	-	-	-	-
Transitional Cell (Bladder) Carcinoma	+	+	-	-	-	-	-	-	-	+
Colorectal Adenocarcinoma	-	+	+	+	-	-	-	-	-	-
Prostatic Adenocarcinoma	-	-	-	-	-	-	+	-	-	-

Carcinoma: Salivary Ductal vs. Breat vs. Prostate										
	Androgen Receptor	BCA-225	GCDFP-15	ER/PR	Mammaglo-bin	Ny-BR-1	PSA/PSAP	CD44	GATA3	ERG
Salivary Duct Carcinoma	+	+	+	-	-	-	-	-	+/-	-
Breast Carcinoma	+	(apocrine)	+	+	+/-	+	-	+	+	-
Prostate Carcinoma	+	-	-	-	-	-	+	+	-	+

Genitourinary Tract										
	PSA/PSAP	P504s	CK, 34βE12	p63	CK 7	Thrombo-modulin	Uroplakin III	PAX-2	GATA3	ERG
Prostate Carcinoma	+	+	-	-	-	-	-	-	-	+
Urothelial Carcinoma	-	-	+	+	+	+	+	-	+	-
Nephrogenic Adenoma	-	+	+/-	-	+	-	-	+	-/+	-

Squamous vs. Transitional Carcinoma									
	CK, 34βE12	p63	CK 5	Thrombo-modulin	CK 7	CK 20	Uroplakin III	COX-2	CK14
Squamous Cell Carcinoma	+	+	+	+	-	-	-	-	+
Transitional Cell Carcinoma	+	+	-/+	+	+	+	+	+	-/+

Lung Carcinomas									
	CD56	Chromo-granin A	Synaptophy-sin	CK 7	Napsin A	p63	TTF-1	BG8	GLUT1
Small Cell Carcinoma	+	-/+	+/-	-	-	-	+	+	-
Adenocarcinoma	-	-	-	+	+	-/+	+	+	+/-
Squamous Cell Carcinoma	-	-	-	-	-	+	-	+	+
Large Cell Neuroendocrine Carcinoma	+	+	+	+/-	-	-	+/-		

Lung Small Cell Carcinoma vs. Merkel Cell Carcinoma								
	TTF-1	CEA	CK 20	Chromo-granin A	E-cadherin	Neurofila-ment	CD117	Synaptophy-sin
Merkel Cell Carcinoma	-	-	+	+	+	(nuclear)	+	+
Lung Small Cell Carcinoma	+	-	-	-	-	-	+/-	+

Mucin Expression in Neoplasms				
	MUC1	MUC2	MUC5AC	MUC6
Pancreatic Adenocarcinoma	+	-	+	-
Lung Carcinoma, Signet Ring	+	-	+	
Ovarian Adenocarcinoma	+	-	+	
Gastric Carcinoma	-	-/+	+	-/+
Cervical Adenocarcinoma	+	-	+	-
Esophageal Carcinoma	+	-	+	
Paget's Extramammary	+	-/+	+	-
Cholangiocarcinoma	+	-	+/-	-
Salivary Duct Adenocarcinoma	-	+	-	+
Colon Carcinoma, Signet Ring	-	+	-	-
Prostate Carcinoma	-	+/-	-	-
Pancreatic Intraductal Papillary Carcinoma	-	+	+	+
HCC	-	-	-	-
Adrenocortical Carcinoma	-	-	-	-
Breast Carcinoma	+	-	-	-
Lung Carcinoma	+	-	-	
Kidney Carcinoma	+	-	-	
Bladder Carcinoma	+	-	-	
Endometrial Carcinoma	+	-	-	-
Ovarian Carcinoma, Mucinous	+	-	+	
Renal Cell Carcinoma	+	-	-	
Urothelial Carcinoma	+	-	-	
Appendiceal Adenocarcinoma	-	+	+	-
Barrett's Esophagus	+	+	+	-
Pancreatic Mucinous Cystic	-	-	+	-
Breast Colloid Carcinoma	+	+	-	+

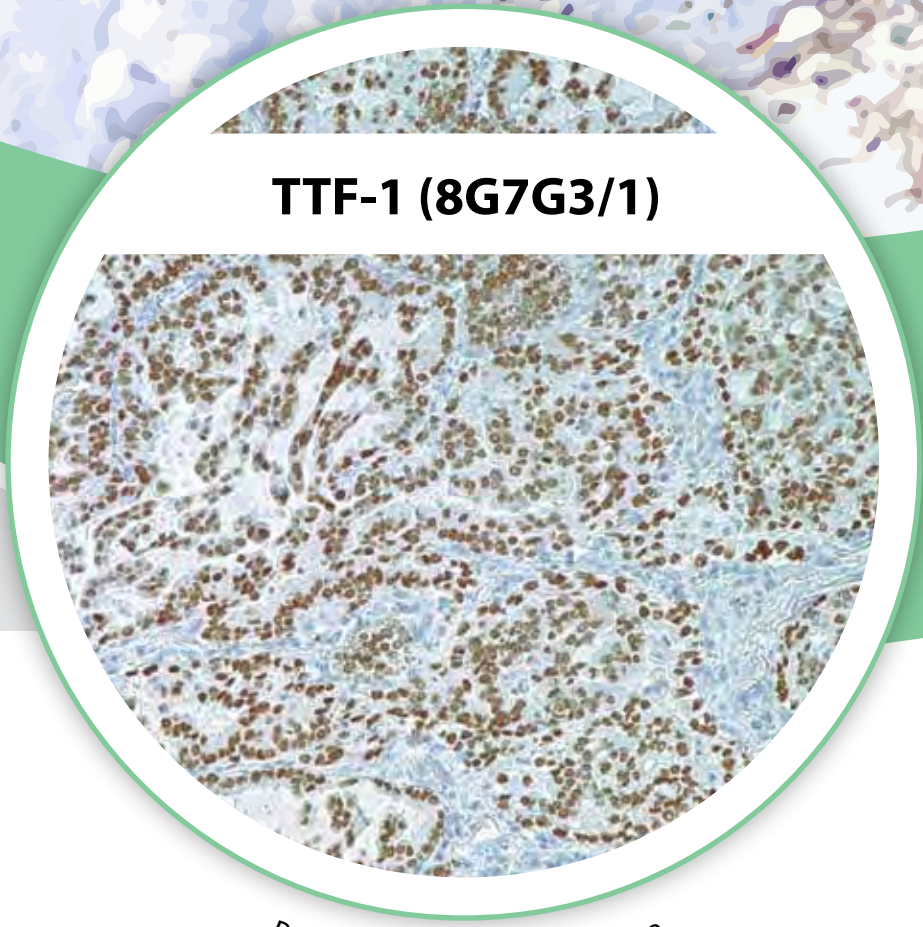
Mucins Expression in Organs					
	MUC1	MUC2	MUC4	MUC5AC	MUC6
Stomach	+	-	+	+	+
Small Intestine	-	+	-	-	+
Colon	-	+	-	-	
Pancreas	+	-	-	-	+

Cutaneous Neoplasm						
	CD10	Androgen Receptor	CK 20	CD34	Ber-EP4	CK 19
Basal Cell Carcinoma	+	+	-	-	+	+
Trichoepithelioma	-	-	+	+	+	+
Merkel Cell Carcinoma	-	-	+	-	+	+
Microcystic Adnexal Carcinoma	+/-	-	-	-	-/+	
Sebaceous Carcinoma	+/-	+	-	-	+	-
Sebaceous Adenoma	-	+	-	-	+	-

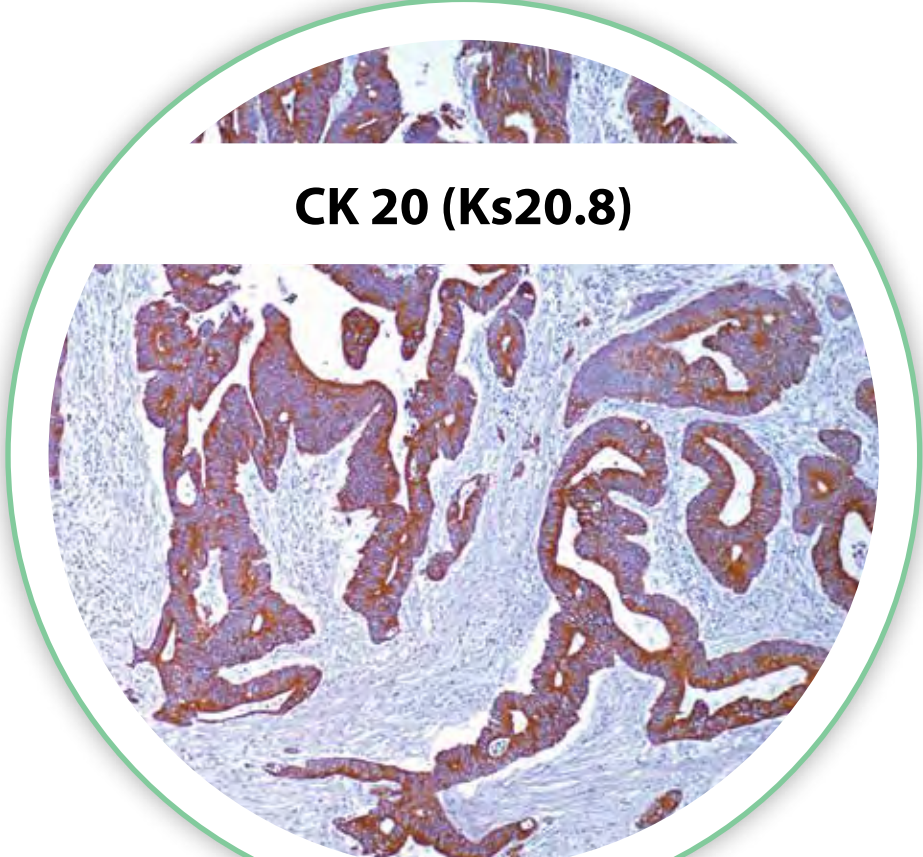
Colon vs. Prostate Adenocarcinoma							
	CDX-2	CK 20	CEA	CA19-9	PSA	P504s	ERG
Colon Adenocarcinoma	+	+	+	+	-	-	-
Prostate Adenocarcinoma	-	-	-	-	+	+	+

Cell Marque strives to be complete and accurate in the presentation of this information; however, Cell Marque, its shareholders, its officers, its employees, and its business associates assume no liability for any reliance on any of the contents of this poster including but not limited to any of the antibody panels without regard to whether or not these are accurate and/or complete. Furthermore, Cell Marque assumes no liability for any omissions. It is the sole responsibility of laboratories to independently validate the application and proper use of any product(s) and/or protocol(s). Cell Marque reserves the right to make any changes, additions, and/or deletions to its product offerings at any time without notice. The antibody panels were constructed based on Cell Marque's internal investigations with scores based on the percentage of positivity represented as follows: "+" for 0-40%, "-/+ " for 40-50%, "+/-" for 50-60%, "+" for 60-100%, and blank for no available data.

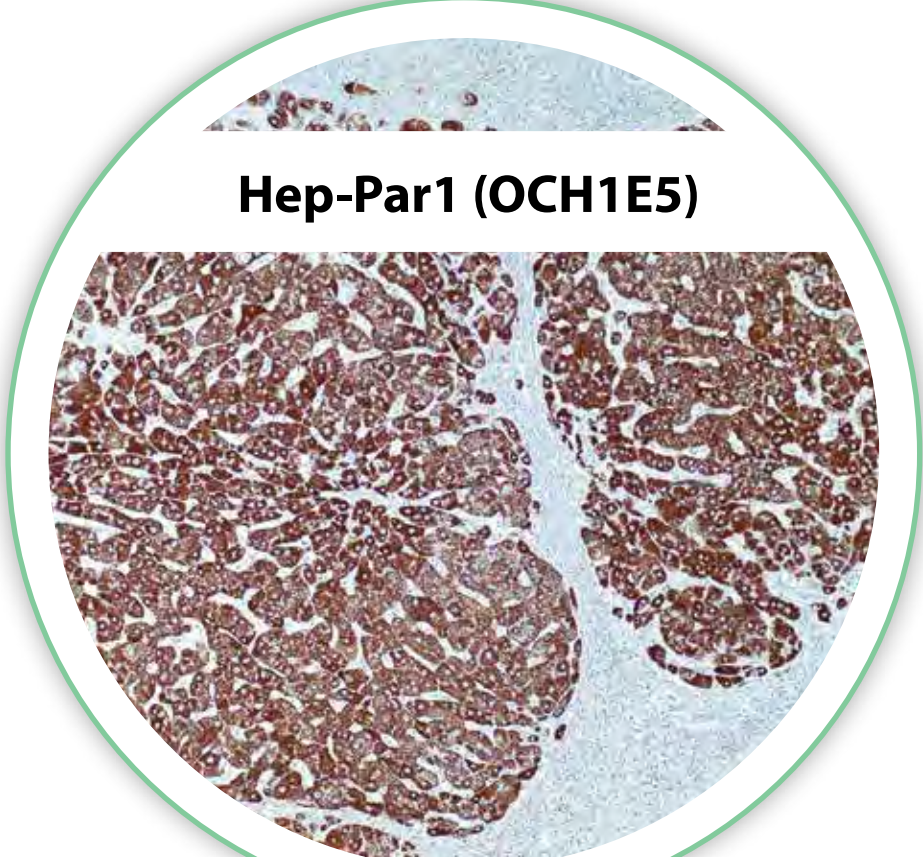
©2015 Sigma-Aldrich Co. LLC. All rights reserved. SIGMA-ALDRICH and Cell Marque are trademarks of Sigma-Aldrich Co.



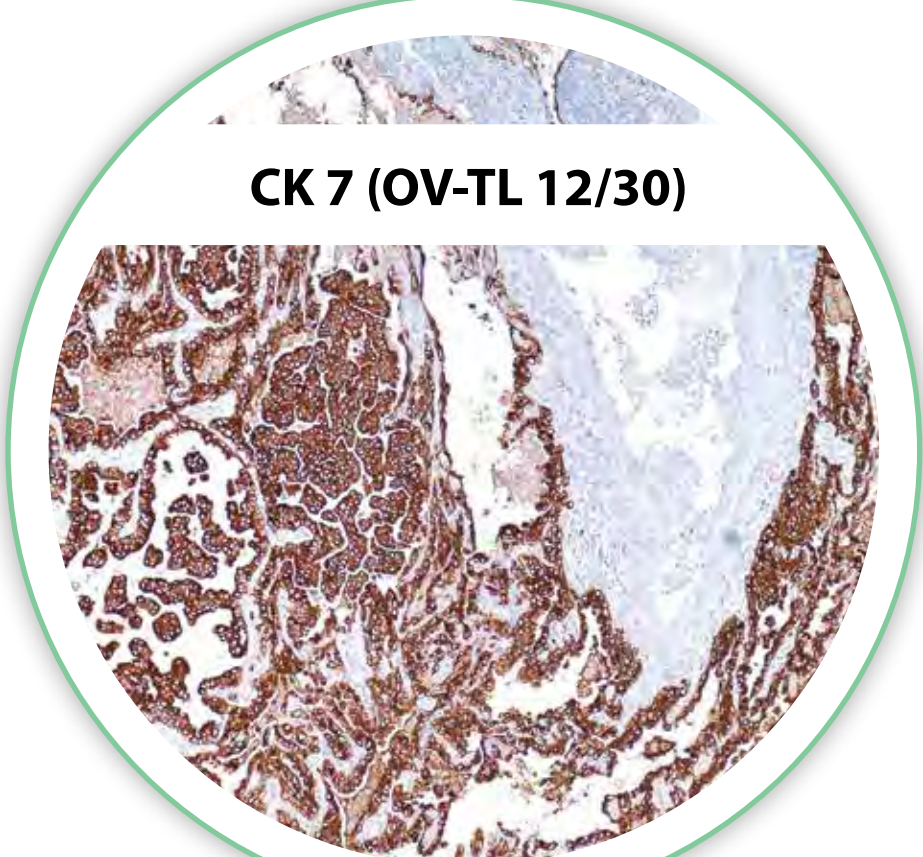
Papillary Thyroid Carcinoma



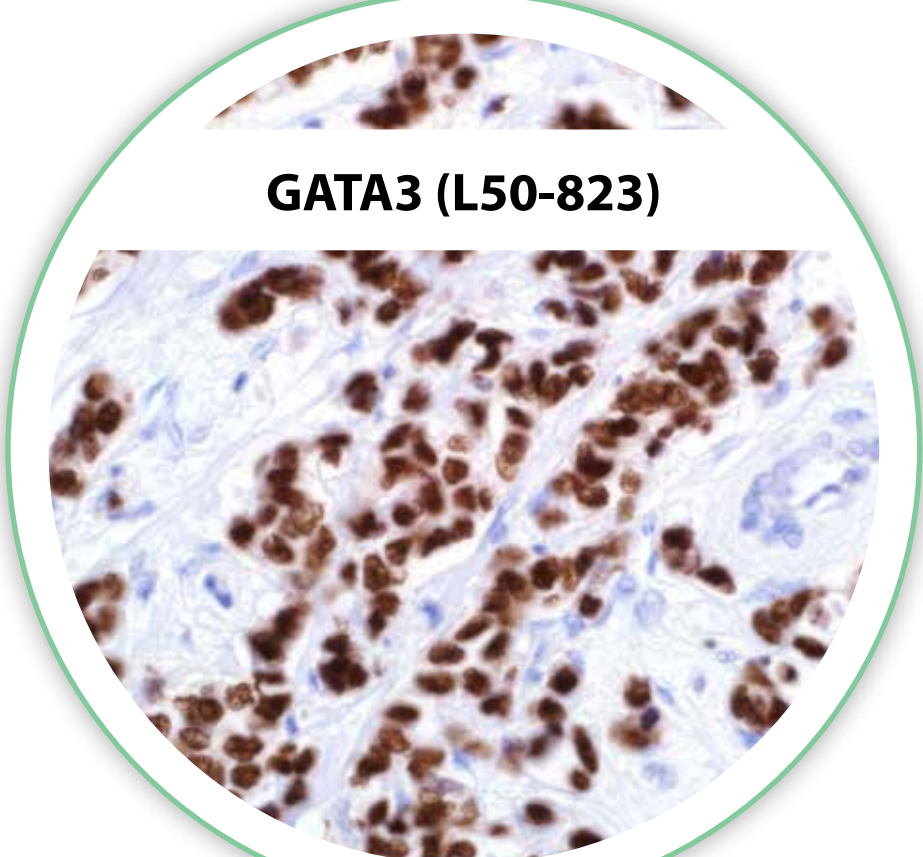
Colorectal Adenocarcinoma




Hepatocellular Carcinoma



Lung Adenocarcinoma



Metastatic Breast Ductal Carcinoma



The HiDef Detection™ HRP and Alk Phos Polymer Systems are high-sensitivity visualization systems that are ready-to-use for immunohistochemical protocols. This two-step system uses an indirect method resulting in an antibody-enzyme complex that universally detects mouse and rabbit primary antibodies. HiDef Detection™ is biotin-free and eliminates nonspecific staining that could result from any endogenous biotin.

**Higher sensitivity, faster protocols, and lower prices!**