

Target-Validated and Characterized IVD Antibodies for Pathology and Immunotherapy

Theaterstraße 6 Telefon 04103/ 8006-342
D-22880 Wedel Telefax 04103/ 8006-359
www.medac-diagnostika.de

NEW PRODUCT FOCUS -- SOX-11 (MonoMAb™)

Mantle cell lymphoma (MCL) accounts for 5% to 10% of mature B-cell neoplasms and is an aggressive disease genetically characterized by overexpression of Cyclin D1. Cyclin D1 overexpression is the hallmark of MCL. However, approximately 5%-10% of MCLs lack Cyclin D1 expression and may be misdiagnosed. Almost all Cyclin D1-positive as well as Cyclin D1-negative MCL,

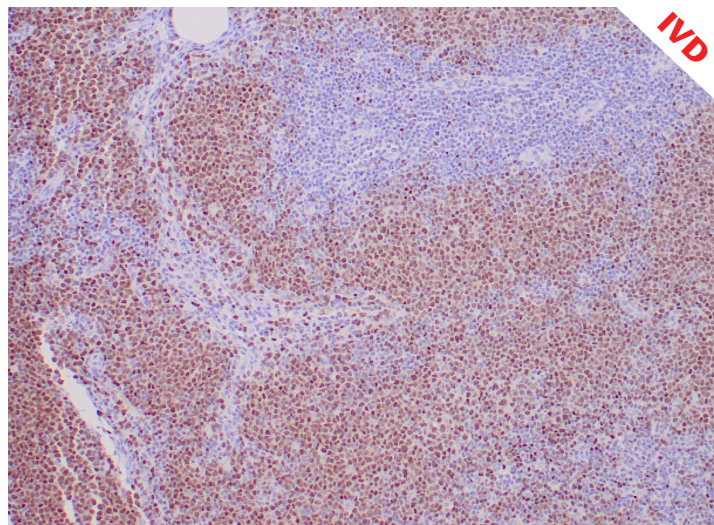
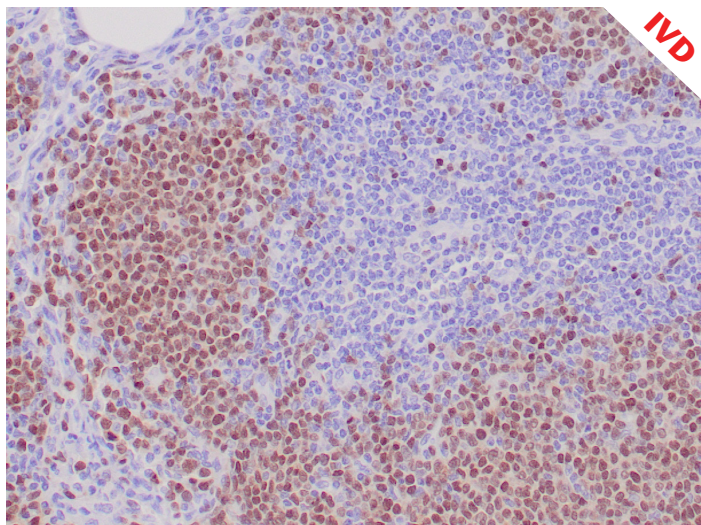
show overexpression of SOX-11. The detection of this transcriptionfactor is a useful biomarker for identifying true cyclin D1-negative MCL.

This MAb recognizes - and is highly specific for - SOX-11 (~47kDa). It does not cross-react with other members of the SOX-family.

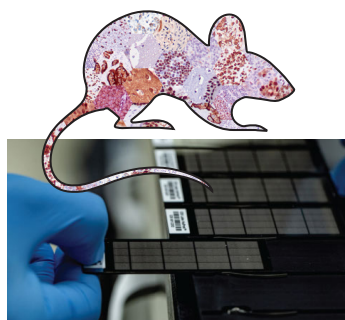
SOX-11 Mouse Monoclonal Antibody

Clone ZM101

Cat # [Z2606](#)



Mantle Cell Lymphoma tissue stained with Anti-Human SOX-11, monospecific clone ZM101



About MonoMAb™ - Zeta's monospecific monoclonal antibodies are produced by traditional hybridoma technologies. Clones are initially assessed by ELISA and gel electrophoresis, then subsequently specificity-tested by immunohistochemistry on FFPE sections.

Then we take quality assurance to the next level - Only the clones that excel on FFPE sections are selected for HuProt™ high-throughput human proteome microarray analysis. The antibodies are incubated with glass slides containing over 21,000 immobilized full-length human proteins. The microarrays are scanned, protein binding analyzed with GenePix Pro Image Analysis Software and cross-reactivity determined.

All antibodies are offered in different format and size with the Suffix after the Catalog #s; "L", "S" & "T" for Concentrated antibodies in 1.0 ml, 0.5 ml & 0.1 ml sizes and Suffix "P" for Ready To Use (RTU) in 7 ml.

zeta-corp.com

ISO 13485-2016