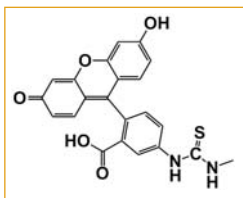


# SureLINK™ Fluorescein Labeling Kits

## Simple, fast, convenient fluorescein labeling kits

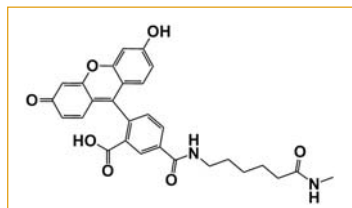
KPL offers two new SureLINK™ Fluorescein Labeling Kits that enable scientists to label proteins with the fluorophores FITC or FAM-X (FAM fluorophore with succinimidyl ester and a seven atom aminohexanoyl spacer, known as 'X'):

- SureLINK™ Fluorescein (FITC)



Fluorescein isothiocyanate (FITC)

- SureLINK Fluorescein-X (FAM-X)



Fluorescein X (FAM-X): 6-(fluorescein-5-carboxamido) hexanoic acid, succinimidyl ester

FAM-X and FITC share the same excitation (495 nm) and emission (520 nm) wavelengths. However, FAM-X forms a stable bond with the amine group of the protein that is more resistant to hydrolysis, minimizing the release of dye during immunoassay procedures and storage. In addition, the tendency towards quenching observed with FITC conjugates is diminished with FAM-X due to the spacer separating the fluorophore from the conjugated biomolecule.

### Convenient kits save time and reagents

Optimized protocols enable labeling and purifying in just two hours with minimal hands-on time. Kits contain reaction-size reagent vials with all the essential components.

### Comprehensive conjugation guide

A thorough guide is provided with both kits, and includes protocols, frequently asked questions and a troubleshooting guide.



SEE MORE with KPL!

# SureLINK™ Labeling Kits

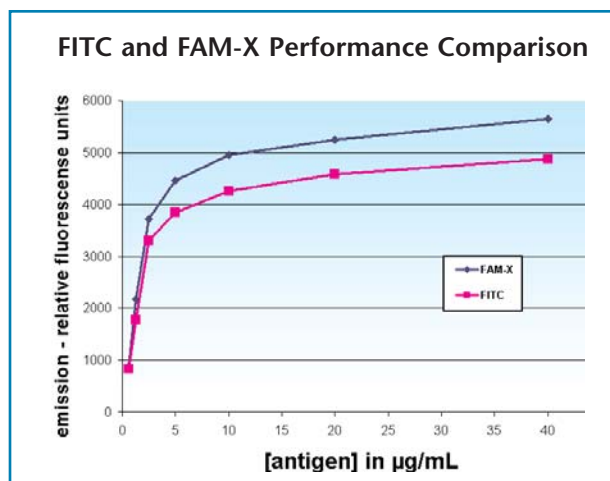
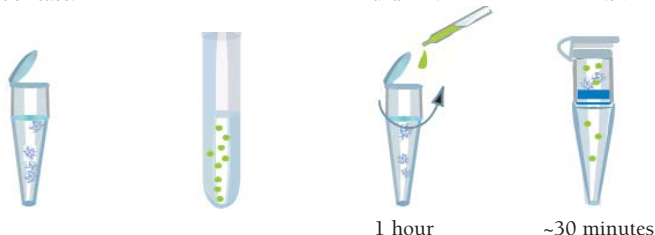


Figure 1: Microwell plates were coated with 40 µg/mL of mouse IgG serially diluted across the plate. FITC-labeled anti-mouse IgG and fluorescein-X-labeled anti-mouse IgG were added at a concentration of 500 ng and the plate was measured.

The results demonstrate that FAM-X achieves higher photoluminescence intensity than standard FITC.

## Fast and Convenient SureLINK Conjugation Protocol

1. Add buffer to protein in reaction tube.
2. Dissolve SureLINK fluorophore in DMF.
3. Aliquot into reaction tube and mix.
4. Remove un conjugated fluorophore with spin filter.



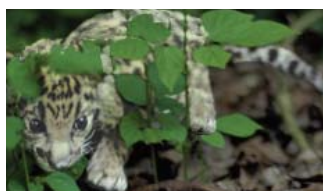
Total time = 1.5 - 2 hours  
Hands-on time = 30 minutes

## Ordering Information

Catalog#	Description	Size
82-00-01	SureLINK™ Fluorescein (FITC) Labeling Kit	5 reactions
82-00-02	SureLINK™ Fluorescein-X (FAM-X) Labeling Kit	5 reactions

### SureLINK Kit Components

- SureLINK Fluorescein (FITC) Labeling Kit:  
SureLINK FITC, 5 x 0.3 mg  
5 Carbonate Bicarbonate Buffer Capsules
- SureLINK Fluorescein-X (FAM-X) Labeling Kit:  
SureLINK Fluorescein-X (FAM-X), 5 x 0.3 mg  
Borate Buffer
- Both kits: Anhydrous DMF, 5 Spin-Pure Filters, 10 Amber Reaction Tubes



To order or for more information, contact us at 800.638.3167 / 301.948.7755, fax 301.948.0169 or visit us at [www.kpl.com](http://www.kpl.com).

ML350-01

For research use only.

©2007 KPL, Inc. All rights reserved.

KPL offers a series of SureLINK Labeling Kits that enable fast, reliable labeling of antibodies and proteins through primary amine groups, including:

- SureLINK AP Conjugation Kits  
Catalog #85-00-02
- SureLINK HRP Conjugation Kits  
Catalog #84-00-02
- SureLINK Chromophoric Biotin Labeling Kits  
Catalog #86-00-01

Successful labeling is easy with optimized kits that deliver speed and convenience. All necessary reagents for labeling proteins are provided. Reaction-size vials make it possible to conjugate a range of protein sample sizes. The conjugates are ideal for use in a variety of applications, such as ELISA, Western blotting, protein microarrays and immunohistochemistry.

Visit [kpl.com](http://kpl.com) to learn more about our line of protein labeling kits.

**medac**  
diagnostika

Theaterstraße 6      Telefon 04103/ 8006-342  
D-22880 Wedel      Telefax 04103/ 8006-359

[www.medac-diagnostika.de](http://www.medac-diagnostika.de)

Gaithersburg, MD 20878  
Phone: 800.638.3167  
Fax: 301.948.0169  
[www.kpl.com](http://www.kpl.com)  
ISO 9001:2000 Registered



SEE MORE with KPL!