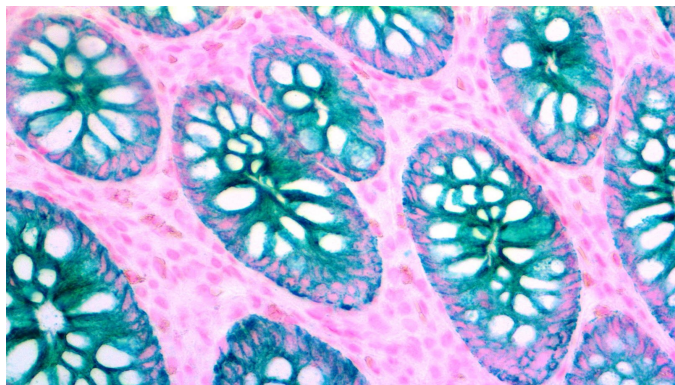


PolyDetector HRP Green

Substrate - Chromogen



Inset: IHC of CK OSCAR on FFPE Colon Tissue with HRP Green.

Intended Use

For In Vitro Diagnostic Use.

Summary and Explanation

The PolyDetector HRP Green Substrate-Chromogen Kit is suitable for use with peroxidase detection systems, which allow the demonstration of cell antigens or nucleic acids in paraffin-embedded tissues, cryostat sections, cytospins, and cell preparations. The substrate-chromogen is the final step in the detection portion; it enables the antibody-antigen or nucleic acid complex to be viewed under a light microscope. This occurs because HRP Green acts as an electron donor in the presence of the enzyme horseradish peroxidase; HRP Green gets oxidized and produces a vibrant green color at the site of the target antigen or nucleic acid. This substrate-chromogen is particularly useful in tissues where there is endogenous melanin or with multiplex IHC or CISH.

HRP Green forms a permanent record of the results of the stain but it is partially soluble in organic solvents like alcohol or xylenes and therefore needs to be mounted with a fast alcohol/xylene protocol or using the ChromoProtector (BSB 0151 – BSB 0156) or Fast ChromoProtector (BSB-0327-15-BSB -0327-1000), then an organic Permanent Mounting medium such as XyGreenPermaMounter (BSB 0169-0174), PermaMounter (BSB 0094-0097) or similar permanent mounting media. HRP Green can be mounted with water-based mounting media such as AquaMounter (BSB 0090-BSB0093), but the color will fade over time.

Presentation

The PolyDetector HRP Green Substrate-Chromogen Kit contains a liquid HRP Green Chromogen dissolved in polymers and an HRP Green Buffer Substrate containing a buffer, hydrogen peroxide as a substrate, and a non-azide antimicrobial.

<i>Catalog No.</i>	<i>Buffer - Substrate</i>	<i>Chromogen</i>
BSB 0128	15mL	0.75mL
BSB 0129	50mL	2.5mL
BSB 0130	50mL	5mL
BSB 0131	20 mL	10mL
BSB 0132	50 mL	25mL
BSB 0133	100 mL	50mL

Storage Store at 2-8°C

Stability

This product is stable up to the expiration date on the product label.

Do not use after expiration date listed on the package label.

Temperature fluctuations should be avoided. Store appropriately when not in use. Adhere to all local laws when disposing of this product.

Preparation of Working Solution

To prepare a working PolyDetector HRP Green Substrate-Chromogen solution, first shake the HRP Green solutions, then add and mix 1 drop of the HRP Green Chromogen with 1 mL of HRP Green Buffer-Substrate. Once mixed, the HRP Green solution is stable for up to 6 hours at room temperature. HRP Green can be counterstained with either Nuclear Fast Red (BSB 0116- BSB 0121) (5 minutes) or Hematoxylin Counterstainer (BSB 0024- BSB 0028) (30-60 seconds).

Abbreviated Immunohistochemical Protocol

Step	ImmunoDetector AP/HRP	PolyDetector AP/HRP	PolyDetector Plus HRP
Peroxidase/AP Blocker	5 min.	5 min.	5 min
Primary Antibody	30-60 min.	30-60 min.	30-60 min.
1st Step Detection	10 min.	30-45 min.	15 min.
2nd Step Detection	10 min.	Not Applicable	15 min.
Substrate- Chromogen	5-10 min.	5-10 min.	5-10 min.
Counterstain / Coverslip	Varies	Varies	Varies

Product Limitations

Due to inherent variability present in immunohistochemical procedures (including fixation time of tissues, dilution factor of antibody, retrieval method utilized and incubation time), optimal performance should be established through the use of positive and negative controls. Results should be interpreted by a qualified medical professional.









Precautions

1. For professional users only. Results should be interpreted by a qualified medical professional.
2. Always wear personal protective equipment such as laboratory coats, goggles and gloves when handling reagents.
3. Dispose of unused solution with copious amounts of water.
4. Do not ingest reagent. If reagent is ingested, seek medical advice immediately.
5. Avoid contact with eyes. If contact occurs, flush with large quantities of water.
6. Follow safety precautions of the heating device used for epitope retrieval (TintoRetriever Pressure Cooker or similar).
7. For additional safety information refer to Safety Data Sheet for this product.
8. For complete recommendations for handling biological specimens, please refer to the CDC document, "Guidelines for Safe Work Practices in Human and Animal Medical Diagnostic Laboratories" (see References in this document).

References

1. U.S. Department of Health and Human Services: Centers for Disease Control and Prevention. Guidelines for Safe Work Practices in Human and Animal Medical Diagnostic Laboratories. Supplement / Vol. 61, January 6, 2012.

Symbol Key / Légende des symboles/Erläuterung der Symbole

	EMERGO EUROPE Prinsessegracht 20 2514 AP The Hague The Netherlands	 Storage Temperature Limites de température Zulässiger Temperaturbereich	 Manufacturer Fabricant Hersteller	 Catalog Number Référence du catalogue Bestellnummer
	In Vitro Diagnostic Medical Device Dispositif médical de diagnostic in vitro In-Vitro-Diagnostikum	 Read Instructions for Use Consulter les instructions d'utilisation Gebrauchsanweisung beachten	 Expiration Date Utiliser jusqu'à Verwendbar bis	 Lot Number Code du lot Chargenbezeichnung