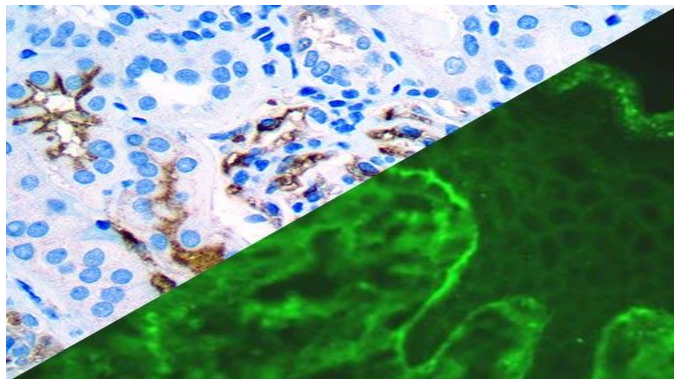


# IgA

**Clone:** Polyclonal  
Rabbit Polyclonal



*Inset: IHC of IgA on a FFPE IHC and IF of IgA on a FFPE Kidney Tissue (IHC) and on a Frozen Bullous Dermatitis Tissue (IF) Tissue*

## Intended Use

For In Vitro Diagnostic Use.

This antibody is intended for use in Immunohistochemical applications on formalin-fixed paraffin-embedded tissues (FFPE), frozen tissue sections and cell preparations. Interpretation of results should be performed by a qualified medical professional.

## Immunogen

Purified human IgA secretory component protein.

## Summary and Explanation

Immunoglobulin A (IgA) is the main immunoglobulin in mucous secretions, including tears, saliva, and colostrum, as well as respiratory, intestinal, prostatic, and vaginal secretions. It is also found in small amounts in blood. Because it is resistant to degradation by enzymes, secretory IgA provides protection against microbes proliferating in body secretions, especially those of the digestive and respiratory tracts.

IgA antibody reacts with surface immunoglobulin IgA alpha chains. It is extremely useful when identifying Acute Leukemias, IgA Myelomas, Plasmacytomas, and B-cell lineage derived Hodgkin's Lymphomas. However, due to the restricted expression of heavy and light chains in these diseases, demonstration of B-cell Lymphomas is possible with clonal gene-rearrangement studies. Lupus nephritis is an inflammation of the kidneys caused by Systemic Lupus Erythematosus. Immunofluorescence reveals positively for IgG, IgA, IgM, C3, and C1q.

<b>Antibody Type</b>	Rabbit Polyclonal	<b>Clone</b>	Polyclonal
<b>Isotype</b>	IgG	<b>Reactivity</b>	Paraffin, Frozen
<b>Localization</b>	Cytoplasmic	<b>Control</b>	Tonsil, Spleen, Lymph Node, Kidney, Colon
<b>Species Reactivity</b>		Human	

## Presentation

Anti-IgA is a purified immunoglobulin fraction of rabbit antiserum that is filtered, sterilized and diluted in buffer pH 7.5, containing BSA and sodium azide as a preservative.

<b>Catalog No.</b>	<b>Presentation</b>	<b>Dilution</b>	<b>Volume/Qty</b>
BSB 3054	Predilute	Ready-to-Use	3.0 mL
BSB 3055	Predilute	Ready-to-Use	7.0 mL
BSB 3056	Predilute	Ready-to-Use	15.0 mL
BSB 3057	Concentrate	(IHC)1:500(IF)1:10	0.1 mL
BSB 3058	Concentrate	(IHC)1:500(IF)1:10	0.5 mL
BSB 3059	Concentrate	(IHC)1:500(IF)1:10	1.0 mL

**\*Ready-to-Use for IHC Only\***

## Control Slides Available

<b>Catalog No.</b>	<b>Quantity</b>
BSB 3685	5 slides

**Storage** Store at 2-8°C (Control Slides: Store at 20-25°C)

## Precautions

1. For professional users only. Results should be interpreted by a qualified medical professional.
2. This product contains <0.1% sodium azide (NaN<sub>3</sub>) as a preservative. Ensure proper handling procedures are used with this reagent.
3. Always wear personal protective equipment such as a laboratory coat, goggles, and gloves when handling reagents.
4. Dispose of unused solution with copious amounts of water.
5. Do not ingest reagent. If reagent is ingested, seek medical advice immediately.
6. Avoid contact with eyes. If contact occurs, flush with large quantities of water.
7. Follow safety precautions of the heating device used for epitope retrieval (TintoRetriever Pressure Cooker or similar).
8. For additional safety information refer to Safety Data Sheet for this product.
9. For complete recommendations for handling biological specimens, please refer to the CDC document, "Guidelines for Safe Work Practices in Human and Animal Medical Diagnostic Laboratories" (see References in this document).

## Stability

**This product is stable up to the expiration date on the product label.**

Do not use after expiration date listed on package label. Temperature fluctuations should be avoided. Store appropriately when not in use and avoid prolonged exposure to room temperature conditions.

## Specimen Preparation

**Paraffin sections:** The antibody can be used on formalin-fixed paraffin-embedded (FFPE) tissue sections. Ensure tissue undergoes appropriate fixation for best results. Pre-treatment of tissues with heat-induced epitope retrieval (HIER) is recommended using Bio SB ImmunoDNA Retriever with Citrate (BSB 0020-BSB 0023), ImmunoDNA Retriever with EDTA (BSB 0030-BSB 0033), or ImmunoDNA Digestor (BSB 0108-0112). See reverse side for complete protocol. Tissue should remain hydrated via use of Bio SB Immuno/DNA Washer solutions (BSB 0029 & BSB 0042).

**Frozen sections and cell preparations:** The antibody can be used on acetone-fixed frozen sections and acetone-fixed cell preparations.

## IHC & IF Protocol

### Preparation for Frozen Tissues Procedure

1. Embed the specimen in OCT inside the cryostat.
2. Cut sections at 5 microns.
3. Place the section on a positively charged glass slide.
4. Air dry for 30-60 minutes.
5. Fix in acetone 100% for 10 minutes.
6. Air dry for another 10 minutes.

### Preparation for FFPE Tissues Procedure

1. Cut and mount 3-5 micron formalin-fixed paraffin-embedded tissues on positively charged slides such as Bio SB Hydrophilic Plus Slides (BSB 7028).
2. Air dry for 2 hours at 58° C.
3. Deparaffinize, dehydrate, and rehydrate tissues.
4. Subject tissues to heat induced epitope retrieval (HIER) using a suitable retrieval solution such as ImmunoDNA Retriever with Citrate (BSB 0020-BSB 0023) or EDTA (BSB 0030-BSB 0033).
5. Any of three heating methods may be used:

#### a. TintoRetriever Pressure Cooker or Equivalent

Place tissues/slides in a staining dish or coplin jar containing the ImmunoDNA Retriever with Citrate or EDTA and place on trivet in the pressure cooker. Add 1-2 inches of distilled water to the pressure cooker and turn heat to high. Incubate for 15 minutes. Open and immediately transfer slides to room temperature.

#### b. TintoRetriever PT Module or Water Bath Method

Place tissues/slides in a pre-warmed staining dish or coplin jar containing the ImmunoDNA Retriever with Citrate or EDTA at 95°-99° C. Incubate for 30-60 minutes.

#### c. Conventional Steamer Method

Place tissues/slides in a pre-warmed staining dish or coplin jar containing the ImmunoDNA Retriever with Citrate or EDTA in a steamer, cover and steam for 30-60 minutes.

6. After heat treatment, transfer slides in ImmunoDNA Retriever with Citrate or EDTA to room temperature and let stand for 15-20 minutes.
7. For manual IF/IHC, perform antibody incubation at ambient temperature. For automated IF/IHC methods, perform antibody incubation according to instrument manufacturer's instructions.
8. Wash slides with ImmunoDNA washer or DI water.
9. Continue IF/IHC protocol. Wash slides between each step with ImmunoDNA washer solution.

### Abbreviated Immunohistochemical Protocol

Step	ImmunoDetector AP/HRP	PolyDetector AP/HRP	PolyDetector Plus HRP
Peroxidase/AP Blocker	5 min.	5 min.	5 min
Primary Antibody	30-60 min.	30-60 min.	30-60 min.
1st Step Detection	10 min.	30-45 min.	15 min.
2nd Step Detection	10 min.	Not Applicable	15 min.
Substrate- Chromogen	5-10 min.	5-10 min.	5-10 min.
Counterstain / Coverslip	Varies	Varies	Varies

### Abbreviated IF Protocol

Step	Incubation Time
Rinse slides in IF wash buffer	5 minutes
Drain and wipe excess IF wash buffer off slide	
Conduct remaining steps in the dark	
Apply Antibody	30-60 minutes
Rinse with 3 changes of IF wash buffer	3x15 minutes each
Coverslip with IF mounting medium	

### Mounting Protocol IHC:

For detailed instructions using biodegradable permanent mounting media such as XyGreen PermaMounter (BSB 0169-0174) or organic solvent-based resin such as PermaMounter (BSB 0094-0097), refer to PI0174 or PI0097.

### Mounting Protocol IF:

1. Bring FluoroMounter or FluoroMounter with DAPI to room temperature.
2. Rinse slides with distilled or deionized water.
3. Remove excess water from slides before laying them flat in the dark.
4. Turn the media bottle upside down before opening the dropper bottle.
5. Apply 1-3 drops of FluoroMounter to each slide making sure the specimen is covered.
6. Incubate 3-5 minutes at room temperature in the dark.
7. Coverslip.
8. Observe under a fluorescent microscope using the appropriate filters.
9. The slides are recommended to be stored at 2-8 °C in the dark.









### Product Limitations

Due to inherent variability present in immunohistochemical procedures (including fixation time of tissues, dilution factor of antibody, retrieval method utilized, and incubation time), optimal performance should be established through the use of positive and negative controls. Results should be interpreted by a qualified medical professional.

### References

1. Arnold A, et al. New Eng J Med. 1983;309:1593-1599
2. Taylor CR, et al. Ibid. pp179-202
3. Hertel BF, et al. New Eng J Med. 1980;302:1293-1297
4. Taylor CR, Arch Path Lab Med. 1978;102:113-121
5. Warnake R, et al. Masson Publishing USA. 1981;203-221
6. Benz RL. Immunoglobulin M nephropathy in a patient with systemic lupus. Am J Med Sci. 2011 Dec;342(6):530-2.
7. U.S. Department of Health and Human Services: Centers for Disease Control and Prevention. Guidelines for Safe Work Practices in Human and Animal Medical Diagnostic Laboratories. Supplement / Vol. 61, January 6, 2012

### Symbol Key / Légende des symboles/Erläuterung der Symbole

	EMERGO EUROPE Prinsessegracht 20 2514 AP The Hague The Netherlands	 Storage Temperature Limites de température Zulässiger Temperaturbereich	 Manufacturer Fabricant Hersteller	 Catalog Number Référence du catalogue Bestellnummer
	In Vitro Diagnostic Medical Device Dispositif médical de diagnostic in vitro In-Vitro-Diagnostikum	 Read Instructions for Use Consulter les instructions d'utilisation Gebrauchsanweisung beachten	 Expiration Date Utiliser jusque Verwendbar bis	 Lot Number Code du lot Chargenbezeichnung