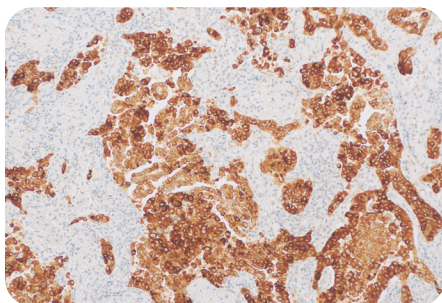
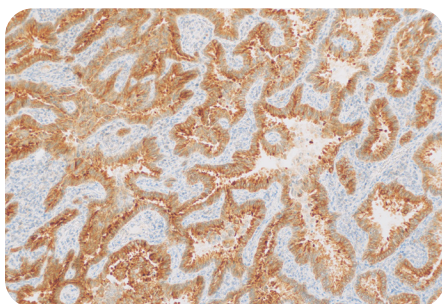


## Cell Marque™ Tissue Diagnostics ROS1 (MRQ-68)

Theaterstraße 6  
D-22880 Wedel

Telefon 04103/ 8006-342  
Telefax 04103/ 8006-359

[www.medac-diagnostika.de](http://www.medac-diagnostika.de)



Top and bottom: Lung Adenocarcinoma

### Intended Use:

ROS1 (MRQ-68) Rabbit Monoclonal Antibody is intended for laboratory use in the detection of the ROS1 protein in formalin-fixed, paraffin-embedded tissue stained in qualitative immunohistochemistry (IHC) testing. This product is not a stand-alone diagnostic, and cannot be used for diagnosis, treatment, prevention, or mitigation of disease.

### References

- <https://lcfamerica.org/lung-cancer-info/types-lung-cancer/ros1-positive-lung-cancer/>
- Luk Peter P., et al. Biomarkers for ALK and ROS1 in Lung Cancer. Immunohistochemistry and Fluorescent In Situ Hybridization. Arch Pathol Lab Med. 2018; 142: 922-928.
- Bell, Daniel J and Weerakkody, Yuranga, et al. ROS1 mutation. <https://radiopaedia.org/articles/ros1-mutation?lang=us>.

### Benefits of Cell Marque™ ROS1 (MRQ-68):

- For *in vitro* diagnostic use
- Helps determine eligibility for targeted therapy for ROS1 mutations, such as crizotinib
- Proprietary rabbit monoclonal technology
- Compatible with multiple automated platforms

### Ordering Information

Description	Cat. No.
0.1 mL concentrate	469R-94
0.5 mL concentrate	469R-95
1.0 mL concentrate	469R-96
1.0 mL predilute	469R-97
7.0 mL predilute	469R-98

This product is designated as IVD no CE Mark.

Phone: +1 916.746.8900  
Fax: +1 916.746.8900  
Email: [international@cellmarque.com](mailto:international@cellmarque.com)  
[www.cellmarque.com](http://www.cellmarque.com)

Merck KGaA  
Frankfurter Strasse 250  
64293 Darmstadt, Germany

[MerckMillipore.com](http://MerckMillipore.com)

The life science business of Merck operates as MilliporeSigma in the U.S. and Canada.

Copyright © 2020 Merck KGaA, Darmstadt, Germany and/or its affiliates. All Rights Reserved. Merck, the vibrant M, Sigma-Aldrich and Cell Marque are trademarks of Merck KGaA, Darmstadt, Germany or its affiliates. All other trademarks are the property of their respective owners. Detailed information on trademarks is available via publicly accessible resources.

MK\_FL6609EN Ver. 1.0 32928 09/2020

WD-2521/10.2021  
REA\_D221\_E-ROS1-Spotlight Original-Flyer

