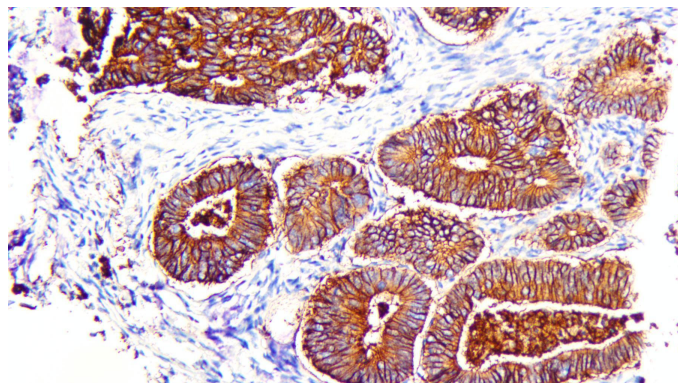


# Claudin-4

**Clone:** EP417

Rabbit Monoclonal



*Inset: IHC of Claudin-4 on a FFPE Colon Adenocarcinoma Tissue*

## Intended Use

For In Vitro Diagnostic Use.

This antibody is intended for use in Immunohistochemical applications on formalin-fixed paraffin-embedded tissues (FFPE), frozen tissue sections, and cell preparations. Interpretation of results should be performed by a qualified medical professional.

\* The Claudin-4 antibody, clone EP417, has been manufactured using Epitomics RabMab® technology covered under Patent No.s 5,675,063 and 7,402,409.

## Immunogen

Synthetic peptide corresponding to residues of human Claudin-4 protein.

## Summary and Explanation

Claudin-4 belongs to the tight-junction-associated protein group. The expression of Claudin-4 is found in most epithelial cells but not in mesothelial cells.

Detection of Claudin-4 via IHC allows distinguishing Adenocarcinoma from malignant Mesothelioma in tissue samples. In malignant effusions, Claudin-4 detection effectively identifies Adenocarcinoma from malignant Mesothelioma with high sensitivity and specificity. Another study showed that Claudin-4 detection is an independent positive prognostic factor for Gastric Carcinoma which restricts the migration of gastric cancer cells. Claudin-4 overexpression in gastric cancer cells is associated with epigenetic derepression and contributes to the suppression of gastric cancer progression and positive prognosis of the patient. On the other hand, Claudin-4 expression is downregulated in epithelial malignancies and in precancerous lesions. In addition, Claudin-4 plays an important role in tumor cell invasion and metastasis. Claudin-4 is a highly specific and sensitive marker to differentiate epithelioid mesotheliomas from metastatic carcinomas.

<b>Antibody Type</b>	Rabbit Monoclonal	<b>Clone</b>	EP417
<b>Isotype</b>	IgG	<b>Reactivity</b>	Paraffin, Frozen
<b>Localization</b>	Membranous	<b>Species Reactivity</b>	Human
<b>Control</b>	Thyroid, Placenta, Kidney, Colon, Breast, Tonsil, Ductal Breast Carcinoma, Lung Neuroendocrine Cancer, Pancreatic Adenocarcinoma, Colon Adenocarcinoma		
<b>Application</b>	Mesothelioma, Lung Cancer, Adenocarcinoma		

## Presentation

Anti-Claudin-4 is a rabbit monoclonal antibody derived from cell culture supernatant that is concentrated, dialyzed, filter sterilized and diluted in buffer pH 7.5, containing BSA and sodium azide as a preservative.

<i>Catalog No.</i>	<i>Presentation</i>	<i>Dilution</i>	<i>Volume</i>
BSB-3792-3	Predilute	Ready-to-Use	3.0 mL
BSB-3792-7	Predilute	Ready-to-Use	7.0 mL
BSB-3792-15	Predilute	Ready-to-Use	15.0 mL
BSB-3792-01	Concentrate	1:50-1:200	0.1 mL
BSB-3792-05	Concentrate	1:50-1:200	0.5 mL
BSB-3792-1	Concentrate	1:50-1:200	1.0 mL

## Control Slides Available

<i>Catalog No.</i>	<i>Quantity</i>
BSB-9432-CS	5 slides

**Storage** Store at 2-8°C (Control Slides: Store at 20-25°C)

## Precautions

1. For professional users only. Results should be interpreted by a qualified medical professional.
2. This product contains <0.1% sodium azide (NaN<sub>3</sub>) as a preservative. Ensure proper handling procedures are used with this reagent.
3. Always wear personal protective equipment such as a laboratory coat, goggles, and gloves when handling reagents.
4. Dispose of unused solution with copious amounts of water.
5. Do not ingest reagent. If reagent is ingested, seek medical advice immediately.
6. Avoid contact with eyes. If contact occurs, flush with large quantities of water.
7. Follow safety precautions of the heating device used for epitope retrieval (TintoRetriever Pressure Cooker or similar).
8. For additional safety information refer to the Safety Data Sheet for this product.
9. For complete recommendations for handling biological specimens, please refer to the CDC document, "Guidelines for Safe Work Practices in Human and Animal Medical Diagnostic Laboratories" (see References in this document).

## Stability

**This product is stable up to the expiration date on the product label.**

Do not use after expiration date listed on the package label. Temperature fluctuations should be avoided. Store appropriately when not in use and avoid prolonged exposure to room temperature conditions.

## Specimen Preparation

**Paraffin sections:** The antibody can be used on formalin-fixed paraffin-embedded (FFPE) tissue sections. Ensure tissue undergoes appropriate fixation for best results. Pre-treatment of tissues with heat-induced epitope retrieval (HIER) is recommended using Bio SB ImmunoDNA Retriever with Citrate (BSB 0020-BSB 0023), ImmunoDNA Retriever with EDTA (BSB 0030-BSB 0033), or ImmunoDNA Digestor (BSB 0108-0112). See reverse side for complete protocol. Tissue should remain hydrated via use of Bio SB Immuno/DNA Washer solutions (BSB 0029 & BSB 0042).

**Frozen sections and cell preparations:** The antibody can be used on acetone-fixed frozen sections and acetone-fixed cell preparations.

## IHC Protocol

1. Cut and mount 3-5 micron formalin-fixed paraffin-embedded tissues on positively charged slides such as Bio SB Hydrophilic Plus Slides (BSB 7028).
2. Air dry for 2 hours at 58° C.
3. Deparaffinize, dehydrate, and rehydrate tissues.
4. Subject tissues to heat induced epitope retrieval (HIER) using a suitable retrieval solution such as ImmunoDNA Retriever with Citrate (BSB 0020-BSB 0023) or EDTA (BSB 0030-BSB 0033).
5. Any of three heating methods may be used:

### a. TintoRetriever Pressure Cooker or Equivalent

Place tissues/slides in a staining dish or coplin jar containing the ImmunoDNA Retriever with Citrate or EDTA and place on trivet in the pressure cooker. Add 1-2 inches of distilled water to the pressure cooker and turn heat to high. Incubate for 15 minutes. Open and immediately transfer slides to room temperature.

### b. TintoRetriever PT Module or Water Bath Method

Place tissues/slides in a pre-warmed staining dish or coplin jar containing the ImmunoDNA Retriever with Citrate or EDTA at 95°-99° C. Incubate for 30-60 minutes.

## c. Conventional Steamer Method

Place tissues/slides in a pre-warmed staining dish or coplin jar containing the ImmunoDNA Retriever with Citrate or EDTA in a steamer, cover and steam for 30-60 minutes.

6. After heat treatment, transfer slides in ImmunoDNA Retriever with Citrate or EDTA to room temperature and let stand for 15-20 minutes.
7. For manual IHC, perform antibody incubation at ambient temperature. For automated IHC methods, perform antibody incubation according to instrument manufacturer's instructions.
8. Wash slides with ImmunoDNA washer or DI water.
9. Continue IHC protocol. Wash slides between each step with ImmunoDNA washer solution.

## Abbreviated Immunohistochemical Protocol

Step	ImmunoDetector AP/HRP	PolyDetector AP/HRP	PolyDetector Plus HRP
Peroxidase/AP Blocker	5 min.	5 min.	5 min
Primary Antibody	30-60 min.	30-60 min.	30-60 min.
1st Step Detection	10 min.	30-45 min.	15 min.
2nd Step Detection	10 min.	Not Applicable	15 min.
Substrate- Chromogen	5-10 min.	5-10 min.	5-10 min.
Counterstain/Coverslip	Varies	Varies	Varies

## Mounting Protocols

For detailed instructions using biodegradable permanent mounting media such as XyGreen PermaMounter (BSB 0169-0174) or organic solvent based resin such as PermaMounter (BSB 0094-0097), refer to PI0174 or PI0097.









## Product Limitations

Due to inherent variability present in immunohistochemical procedures (including fixation time of tissues, dilution factor of antibody, retrieval method utilized, and incubation time), optimal performance should be established through the use of positive and negative controls. Results should be interpreted by a qualified medical professional.

## References

1. Jo VY, Cibas ES, Pinkus GS. Claudin-4 immunohistochemistry is highly effective in distinguishing adenocarcinoma from malignant mesothelioma in effusion cytology. Cancer Cytopathol. 2014;122(4):299-306.
2. Hicks, D.A. et al. Claudin-4 activity in ovarian tumor cell apoptosis resistance and migration. BMC Cancer 16, 788 (2016).
3. Kwon, M., Kim, SH., Jeong, H. et al. Claudin-4 overexpression is associated with epigenetic depression in gastric carcinoma. Lab Invest 91, 1652-1667 (2011)
4. Neesse A et al. Claudin-4 as therapeutic target in cancer. Arch Biochem Biophys. 2012;524(1):64-70.
5. Ordóñez NG. Value of claudin-4 immunostaining in the diagnosis of mesothelioma. Am J Clin Pathol. 2013;139(5):611-619.

## Symbol Key/Légende des symboles/Erläuterung der Symbole

	EMERGO EUROPE Prinsessegracht 20 2514 AP The Hague The Netherlands	 Storage Temperature Limites de température Zulässiger Temperaturbereich	 Manufacturer Fabricant Hersteller	 Catalog Number Référence du catalogue Bestellnummer
	In Vitro Diagnostic Medical Device Dispositif médical de diagnostic in vitro In-Vitro-Diagnostikum	 Read Instructions for Use Consulter les instructions d'utilisation Gebrauchsanweisung beachten	 Expiration Date Utiliser jusque Verwendbar bis	 Lot Number Code du lot Chargenbezeichnung