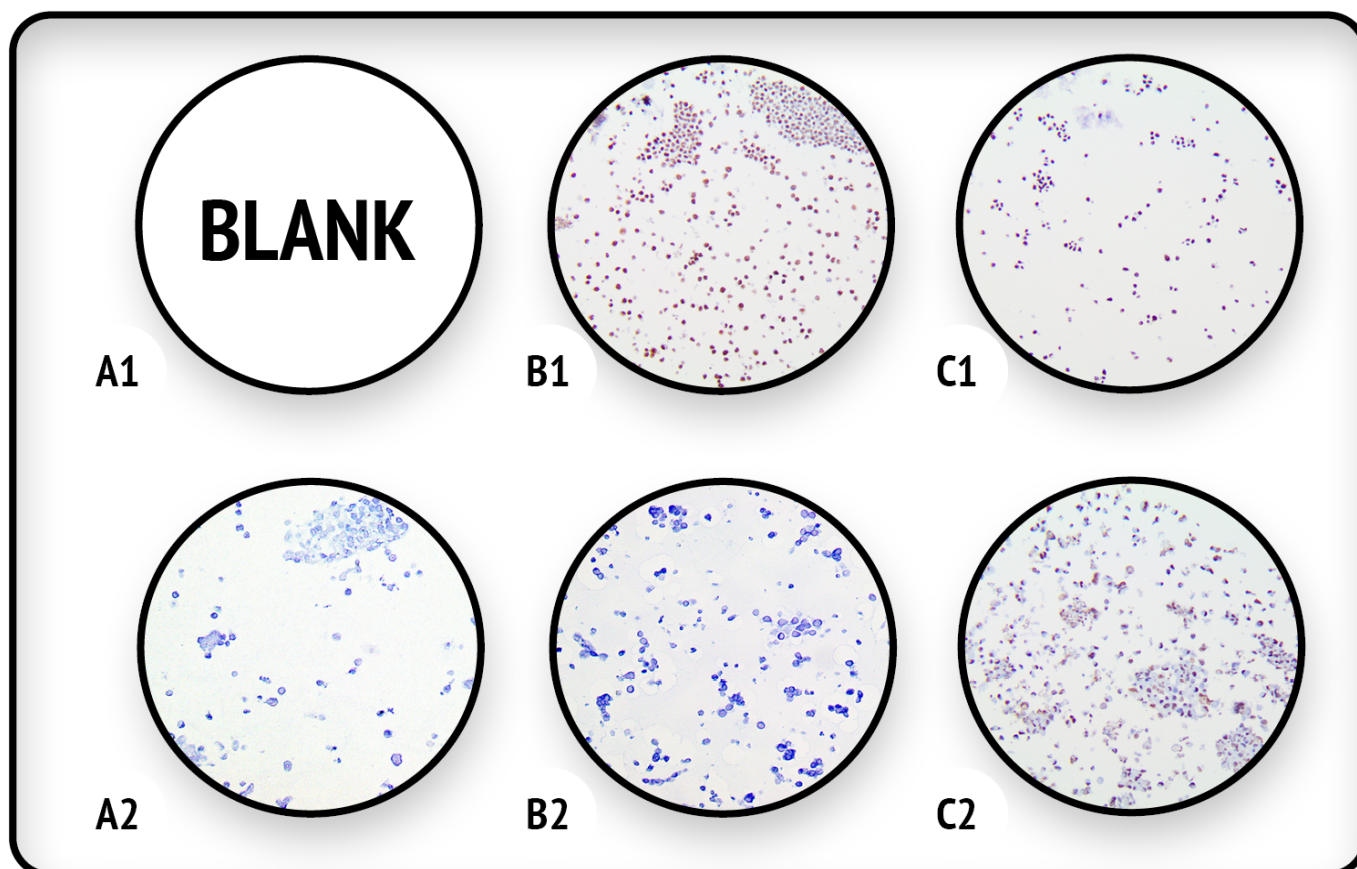


RUO

5-Core Multi-Infectious Disease Cell Line Microarray



Intended Use

For Research Use Only

Presentation

Five 5-core Infectious Disease Cell Line Microarrays (2 mm cores), mounted on Hydrophilic Plus Slides and provided in a plastic mailer.

Summary and Explanation

The 5-Core Multi-Infectious Disease Cell Line Microarray is an unstained ready-to-use microscope slide consisting of 5 (2 mm) cores of human formalin-fixed paraffin-embedded cell lines which are assembled in an array fashion to allow multiplex molecular pathology analysis and validation of reagents, or to be used as controls for Immunohistochemistry and/or in situ hybridization (CISH and FISH) applications.

The map below outlines the various cell lines used. Each slide comes with a “blank” core for easy orientation:

Blank Core	Adenovirus positive cell line core	HHV-8 positive cell line core
Negative control cell line core	Negative control cell line core	SV-40 positive cell line core

Catalog No.	Quantity
BSB-0307-CS-RUO	5 slides

Storage Store at 20-25°C

Precautions

1. For professional users only. Results should be interpreted by a qualified medical professional.
2. Ensure proper handling procedures are used with reagents.
3. Always wear personal protective equipment such as laboratory coat, goggles, and gloves when handling reagents.
4. Dispose of unused material according to local and federal regulations.
5. Follow safety precautions of the heating device used for epitope retrieval (TintoRetriever Pressure Cooker or similar).
6. For additional safety information refer to Safety Data Sheet for this product.
7. For complete recommendations for handling biological specimens please refer to the CDC document, "Guidelines for Safe Work Practices in Human and Animal Medical Diagnostic Laboratories" (see References in this document).

Stability

This product is stable up to the expiration date on the product label.

Do not use the after expiration date listed on the package label.

IHC Protocol

1. Subject CLMA to heat induced epitope retrieval (HIER) using a suitable retrieval solution such as ImmunoDNA Retriever with Citrate (BSB 0020-BSB 0023) or EDTA (BSB 0030-BSB 0033).

2. Any of following heating methods may be used:

a. TintoRetriever Pressure Cooker or Equivalent

Place tissues/slides in a staining dish or coplin jar containing the ImmunoDNA Retriever with Citrate or EDTA and place on trivet in the pressure cooker. Add 1-2 inches of distilled water to the pressure cooker and turn heat to high. Incubate for 15 minutes. Open and immediately transfer slides to room temperature.

b. TintoRetriever PT Module or Water Bath Method

Place tissues/slides in a pre-warmed staining dish or coplin jar containing the ImmunoDNA Retriever with Citrate or EDTA at 95°-99° C. Incubate for 30-60 minutes.

c. Conventional Steamer Method

Place tissues/slides in a pre-warmed staining dish or coplin jar containing the ImmunoDNA Retriever with Citrate or EDTA in a steamer, cover and steam for 30-60 minutes.

3. After heat treatment, transfer slides in ImmunoDNA Retriever with Citrate or EDTA to room temperature and let stand for 15-20 minutes.
4. For manual staining, perform antibody incubation at room temperature. For automated staining methods, perform antibody incubation according to instrument manufacturer's instructions.
5. Wash slides with ImmunoDNA washer or DI water.
6. Continue IHC staining protocol. Wash slides between each step with ImmunoDNA washer solution.

Abbreviated Immunohistochemical Protocol

Step	ImmunoDetector AP/HRP	PolyDetector AP/HRP	PolyDetector Plus HRP
Peroxidase/AP Blocker	5 min.	5 min.	5 min
Primary Antibody	30-60 min.	30-60 min.	30-60 min.
1st Step Detection	10 min.	30-45 min.	15 min.
2nd Step Detection	10 min.	Not Applicable	15 min.
Substrate-Chromogen	5-10 min.	5-10 min.	5-10 min.
Counterstain / Coverslip	Varies	Varies	Varies

Mounting Protocols

For detailed instructions using biodegradable permanent mounting media such as XyGreen PermaMunter (BSB 0169-0174) or organic solvent based resin such as PermaMunter (BSB 0094-0097), refer to PI0174 or PI0097.







Product Limitations

Due to inherent variability present in immunohistochemical procedures (including fixation time of tissues, dilution factor of antibody, retrieval method utilized, and incubation time), optimal performance should be established through the use of positive and negative controls. Results should be interpreted by a qualified medical professional.

References

1.U.S. Department of Health and Human Services: Centers for Disease Control and Prevention. Guidelines for Safe Work Practices in Human and Animal Medical Diagnostic Laboratories. Supplement / Vol. 61, January 6, 2012. <https://www.cdc.gov/mmwr/pdf/other/su6101>.

Symbol Key / Légende des symboles/Erläuterung der Symbole

 Storage Temperature Limites de température Zulässiger Temperaturbereich	 Manufacturer Fabricant Hersteller	 Catalog Number Référence du catalogue Bestellnummer
 Read Instructions for Use Consulter les instructions d'utilisation Gebrauchsanweisung beachten	 Expiration Date Utiliser jusqu'à Verwendbar bis	 Lot Number Code du lot Chargenbezeichnung

BIO•SB

A CANCER DIAGNOSTICS COMPANY



5385 Hollister Avenue, Bldg. 8, Ste. 108, Santa Barbara, CA 93111, USA
Tel. (805) 692-2768 | Tel. (800) 561-1145 | Fax. (805) 692-2769
E-mail: sales@biosb.com | Website: www.biosb.com